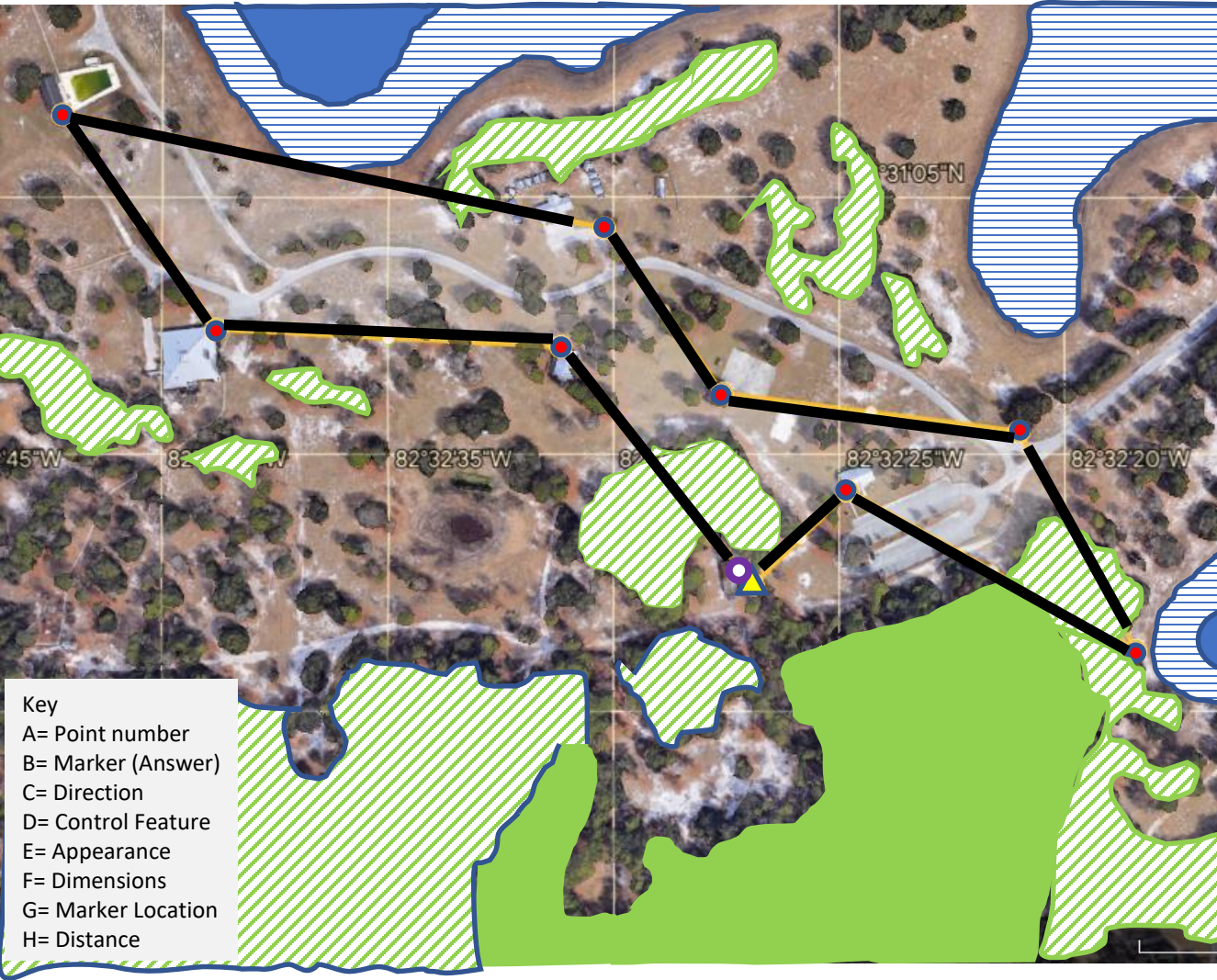


# CARD 1



- Key
- A= Point number
  - B= Marker (Answer)
  - C= Direction
  - D= Control Feature
  - E= Appearance
  - F= Dimensions
  - G= Marker Location
  - H= Distance

A B C D E F G H

Location: SANDHILL

| Course Name<br>CARD 1 |   |     | Total Distance<br>1621 M |   |    | Max Elev<br>13 M |     |
|-----------------------|---|-----|--------------------------|---|----|------------------|-----|
| 1                     |   | 48  | █                        | ⋯ |    | └┘               | 80  |
| 2                     |   | 124 | █                        | ⋮ |    | └┘               | 195 |
| 3                     |   | 336 | /                        | > |    | ○                | 150 |
| 4                     |   | 280 | △                        | ☼ | 3M |                  | 175 |
| 5                     |   | 330 | △                        | ☼ | 3M |                  | 120 |
| 6                     |   | 287 | ∩                        | ∩ |    | ○                | 325 |
| 7                     |   | 148 | █                        | ⋮ |    | ∧                | 155 |
| 8                     |   | 97  | █                        | ⋮ |    | ∧                | 210 |
| 9                     | S | 146 | █                        | ⋯ |    | <                | 170 |



**Column C**  
(which one of several)

|  |                    |
|--|--------------------|
|  | upper              |
|  | lower              |
|  | middle             |
|  | most north-eastern |

**Column D**  
(the control feature)

|  |                  |
|--|------------------|
|  | carthbank        |
|  | quarry           |
|  | earth wall       |
|  | terrace          |
|  | spur             |
|  | re-entrant       |
|  | gully            |
|  | hill             |
|  | knoll            |
|  | saddle           |
|  | depression       |
|  | small depression |
|  | pit              |
|  | anthill          |
|  | platform*        |
|  | crag/cliff       |
|  | boulder          |

|  |                          |
|--|--------------------------|
|  | rock pillar              |
|  | group of boulders        |
|  | boulder field            |
|  | stony ground             |
|  | cave                     |
|  | narrow passage           |
|  | bare rock                |
|  | lake                     |
|  | pond                     |
|  | waterhole/wet pit        |
|  | stream                   |
|  | ditch*                   |
|  | dry ditch/small gully    |
|  | marsh                    |
|  | firm ground in marsh     |
|  | narrow marsh             |
|  | minor water channel      |
|  | well                     |
|  | spring/source            |
|  | water tank, water trough |
|  | open land                |
|  | semi-open land           |
|  | forest corner            |
|  | clearing                 |

|  |                     |
|--|---------------------|
|  | vegetation boundary |
|  | thicket             |
|  | linear thicket      |
|  | distinctive tree    |
|  | distinctive tree*   |
|  | copse               |
|  | copse*              |
|  | root stock          |
|  | road                |
|  | track/path          |
|  | ride                |
|  | wall                |
|  | fence               |
|  | telegraph pole      |
|  | power line          |
|  | footbridge          |
|  | building            |
|  | ruin                |
|  | tower               |
|  | crossing point      |
|  | shooting platform   |
|  | fodder rack         |
|  | tunnel              |
|  | paved area          |

|  |                                      |
|--|--------------------------------------|
|  | pipeline                             |
|  | charcoal burning ground              |
|  | sculpture                            |
|  | building pass through                |
|  | stairway                             |
|  | boundary stone/cairn                 |
|  | broken ground                        |
|  | special item (meaning will be given) |
|  | special item*                        |

**Column E**  
(appearance)

|  |            |
|--|------------|
|  | low        |
|  | shallow    |
|  | deep       |
|  | ruined     |
|  | overgrown  |
|  | open       |
|  | stony      |
|  | marshy     |
|  | sandy      |
|  | coniferous |
|  | deciduous  |

**Column F**  
(dimensions)

|       |  |
|-------|--|
| 2.5   | feature height                                   |
| 8 x 4 | horizontal dimensions                            |
| 0.5   | height of feature on slope                       |
| 3.0   |  |
| 2.0   | heights of two features with control between the |
| 3.0   |  |

**Column G**  
(marker location)

|  |                    |
|--|--------------------|
|  | NE side            |
|  | E edge             |
|  | W corner (inside)  |
|  | W corner (outside) |
|  | bend               |
|  | NW tip             |
|  | N part             |
|  | S end              |
|  | upper part         |
|  | lower part         |
|  | between            |
|  | top                |
|  | beneath            |
|  | foot (no dir.)     |
|  | NE foot            |

**Column H**  
(other information)

|  |                |
|--|----------------|
|  | drinks         |
|  | radio control  |
|  | manned control |
|  | first aid      |

Columns D-F or D-G may also contain, for example:

|  |                        |
|--|------------------------|
|  | road junction          |
|  | track/stream crossing  |
|  | between hill and knoll |
|  | between boulders       |

Compass directions are mentioned in some of the above descriptions. Similar symbols exist for directions not shown.

\*non-IOF symbol.

# IOF Orienteering Map Symbols

### Land forms

- Contour
- Index contour
- Form line
- Slope line
- Contour value
- Earth bank
- Earth wall
- Small earth wall
- Erosion gully
- Small erosion gully
- Knoll
- Small knoll
- Elongated knoll
- Depression
- Small depression
- Pit
- Broken ground
- Special land form feature

### Water and marsh

- Lake
- Pond
- Waterhole
- Uncrossable river
- Crossable watercourse
- Crossable small watercourse
- Minor water channel
- Narrow marsh
- Uncrossable marsh
- Marsh
- Indistinct marsh
- Well
- Spring
- Special water feature

### Rock and boulders

- Impassable cliff
- Rock pillars/cliffs
- Passable rock face
- Rocky pit
- Cave
- Boulder
- Large boulder
- Boulder field
- Boulder cluster
- Stony ground
- Open sandy ground
- Bare rock

### Man-made features

- Motorway
- Major road
- Minor road
- Road
- Vehicle track
- Footpath
- Small path
- Less distinct small path
- Narrow ride
- Visible path junction
- Indistinct junction
- Footbridge
- Crossing point with bridge
- Crossing point without bridge
- Railway
- Power line
- Major power line
- Tunnel
- Stone wall
- Ruined stone wall
- High stone wall
- Fence
- Ruined fence
- High fence
- Crossing point
- Building
- Settlement
- Permanently out of bounds
- Paved area
- Ruin
- Firing range
- Grave
- Crossable pipeline
- Uncrossable pipeline
- High tower
- Small tower
- Cairn
- Fodder rack
- Special man-made feature

### Vegetation

- Open land
- Open land with scattered trees
- Rough open land
- Rough open land with scattered trees
- Forest: easy running
- Forest: slow running
- Undergrowth: slow running
- Forest: difficult to run
- Undergrowth: difficult to run
- Vegetation: very difficult to run, impassable
- Forest runnable in one direction
- Orchard
- Vineyard
- Distinct cultivation boundary
- Cultivated land
- Distinct vegetation boundary
- Indistinct vegetation boundary
- Special vegetation feature

### Overprinting symbols

- Start
- Control point
- Control number
- Line
- Marked route
- Finish
- Uncrossable boundary
- Crossing point
- Out-of-bounds area
- Dangerous area
- Forbidden route
- First aid point
- Refreshment point

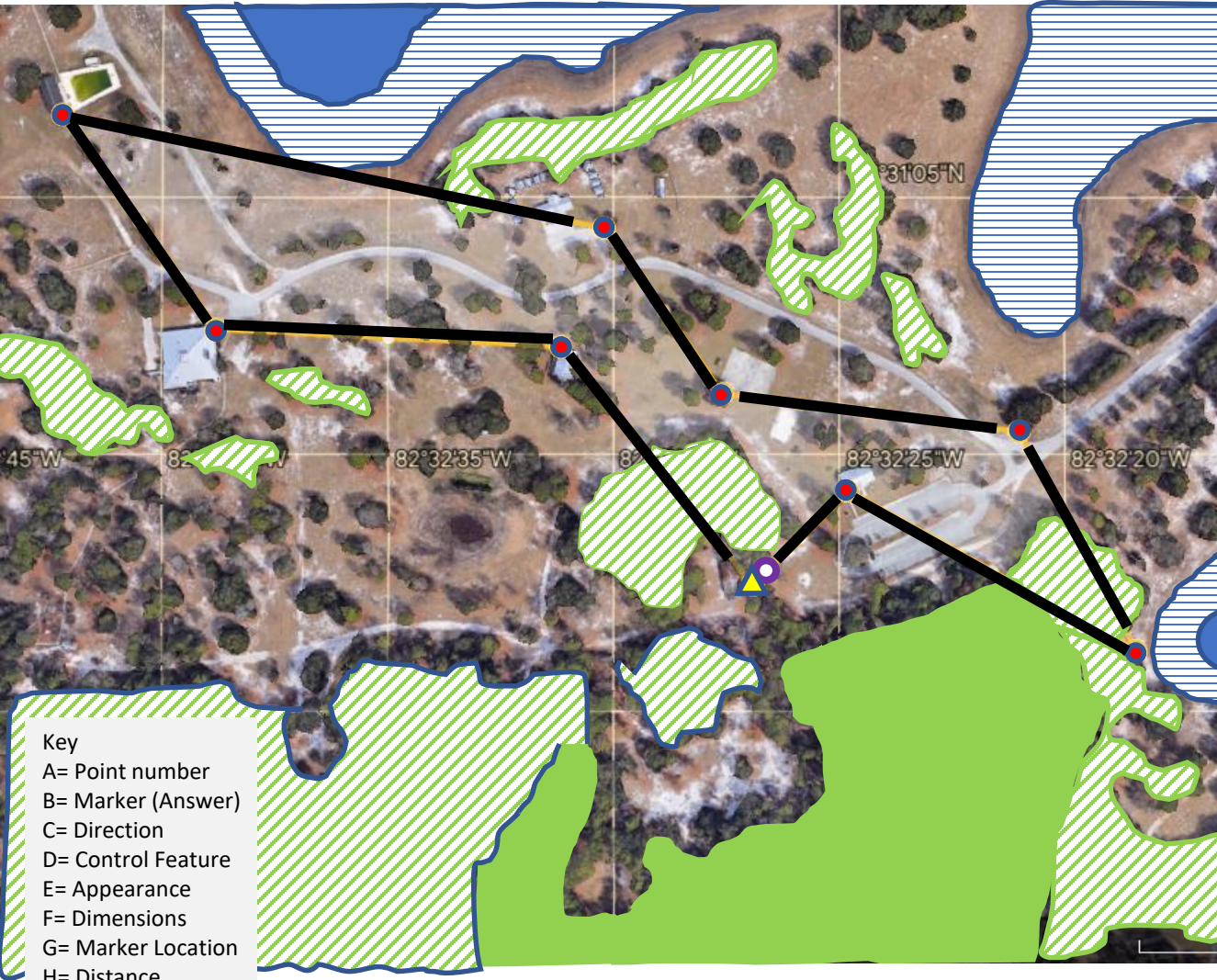
### Technical symbols

- Magnetic north line
- Registration marks
- Spot height

© Simon Errington 2007.  
Copies of these map symbols and of the IOF pictorial control descriptions can be downloaded from [www.maprunner.co.uk](http://www.maprunner.co.uk)  
The full ISOM 2000 specification is available from [www.orienteeing.org](http://www.orienteeing.org)



# CARD 2



A B C D E F G H

Location: SANDHILL

| Course Name |       | Total Distance | Max Elev |   |     |
|-------------|-------|----------------|----------|---|-----|
| CARD 2      |       | 1612 M         | 13 M     |   |     |
| 1           | 326   | ■              | ■        | ▲ | 170 |
| 2           | 278   | ■              | ■        | ▲ | 210 |
| 3           | 332   | ∩              | ∩        | ○ | 155 |
| 4           | 106   | ▲              | ☼        |   | 325 |
| 5           | 150   | ▲              | ☼        |   | 120 |
| 6           | 101   | /              | ∩        | ○ | 170 |
| 7           | 153   | ■              | ■        | └ | 145 |
| 8           | 302   | ■              | ■        | └ | 210 |
| 9           | S 228 | ■              | ■        | < | 80  |

80 M

Key  
 A= Point number  
 B= Marker (Answer)  
 C= Direction  
 D= Control Feature  
 E= Appearance  
 F= Dimensions  
 G= Marker Location  
 H= Distance



**Column C**  
(which one of several)

|  |                    |
|--|--------------------|
|  | upper              |
|  | lower              |
|  | middle             |
|  | most north-eastern |

**Column D**  
(the control feature)

|  |                  |
|--|------------------|
|  | carthbank        |
|  | quarry           |
|  | earth wall       |
|  | terrace          |
|  | spur             |
|  | re-entrant       |
|  | gully            |
|  | hill             |
|  | knoll            |
|  | saddle           |
|  | depression       |
|  | small depression |
|  | pit              |
|  | anthill          |
|  | platform*        |
|  | crag/cliff       |
|  | boulder          |

|  |                          |
|--|--------------------------|
|  | rock pillar              |
|  | group of boulders        |
|  | boulder field            |
|  | stony ground             |
|  | cave                     |
|  | narrow passage           |
|  | bare rock                |
|  | lake                     |
|  | pond                     |
|  | waterhole/wet pit        |
|  | stream                   |
|  | ditch*                   |
|  | dry ditch/small gully    |
|  | marsh                    |
|  | firm ground in marsh     |
|  | narrow marsh             |
|  | minor water channel      |
|  | well                     |
|  | spring/source            |
|  | water tank, water trough |
|  | open land                |
|  | semi-open land           |
|  | forest corner            |
|  | clearing                 |

|  |                     |
|--|---------------------|
|  | vegetation boundary |
|  | thicket             |
|  | linear thicket      |
|  | distinctive tree    |
|  | distinctive tree*   |
|  | copse               |
|  | copse*              |
|  | root stock          |
|  | road                |
|  | track/path          |
|  | ride                |
|  | wall                |
|  | fence               |
|  | telegraph pole      |
|  | power line          |
|  | footbridge          |
|  | building            |
|  | ruin                |
|  | tower               |
|  | crossing point      |
|  | shooting platform   |
|  | fodder rack         |
|  | tunnel              |
|  | paved area          |

|  |                                      |
|--|--------------------------------------|
|  | pipeline                             |
|  | charcoal burning ground              |
|  | sculpture                            |
|  | building pass through                |
|  | stairway                             |
|  | boundary stone/cairn                 |
|  | broken ground                        |
|  | special item (meaning will be given) |
|  | special item*                        |

**Column E**  
(appearance)

|  |            |
|--|------------|
|  | low        |
|  | shallow    |
|  | deep       |
|  | ruined     |
|  | overgrown  |
|  | open       |
|  | stony      |
|  | marshy     |
|  | sandy      |
|  | coniferous |
|  | deciduous  |

**Column F**  
(dimensions)

|           |  |
|-----------|--|
| 2.5       | feature height                                   |
| 8 x 4     | horizontal dimensions                            |
| 0.5 / 3.0 | height of feature on slope                       |
| 2.0 / 3.0 | heights of two features with control between the |

**Column G**  
(marker location)

|  |                    |
|--|--------------------|
|  | NE side            |
|  | E edge             |
|  | W corner (inside)  |
|  | W corner (outside) |
|  | bend               |
|  | NW tip             |
|  | N part             |
|  | S end              |
|  | upper part         |
|  | lower part         |
|  | between            |
|  | top                |
|  | beneath            |
|  | foot (no dir.)     |
|  | NE foot            |

**Column H**  
(other information)

|  |                |
|--|----------------|
|  | drinks         |
|  | radio control  |
|  | manned control |
|  | first aid      |

Columns D-F or D-G may also contain, for example:

|  |                        |
|--|------------------------|
|  | road junction          |
|  | track/stream crossing  |
|  | between hill and knoll |
|  | between boulders       |

Compass directions are mentioned in some of the above descriptions. Similar symbols exist for directions not shown.

\*non-IOF symbol.

# IOF Orienteering Map Symbols

### Land forms

- Contour
- Index contour
- Form line
- Slope line
- Contour value
- Earth bank
- Earth wall
- Small earth wall
- Erosion gully
- Small erosion gully
- Knoll
- Small knoll
- Elongated knoll
- Depression
- Small depression
- Pit
- Broken ground
- Special land form feature

### Water and marsh

- Lake
- Pond
- Waterhole
- Uncrossable river
- Crossable watercourse
- Crossable small watercourse
- Minor water channel
- Narrow marsh
- Uncrossable marsh
- Marsh
- Indistinct marsh
- Well
- Spring
- Special water feature

### Rock and boulders

- Impassable cliff
- Rock pillars/cliffs
- Passable rock face
- Rocky pit
- Cave
- Boulder
- Large boulder
- Boulder field
- Boulder cluster
- Stony ground
- Open sandy ground
- Bare rock

### Man-made features

- Motorway
- Major road
- Minor road
- Road
- Vehicle track
- Footpath
- Small path
- Less distinct small path
- Narrow ride
- Visible path junction
- Indistinct junction
- Footbridge
- Crossing point with bridge
- Crossing point without bridge
- Railway
- Power line
- Major power line
- Tunnel
- Stone wall
- Ruined stone wall
- High stone wall
- Fence
- Ruined fence
- High fence
- Crossing point
- Building
- Settlement
- Permanently out of bounds
- Paved area
- Ruin
- Firing range
- Grave
- Crossable pipeline
- Uncrossable pipeline
- High tower
- Small tower
- Cairn
- Fodder rack
- Special man-made feature

### Vegetation

- Open land
- Open land with scattered trees
- Rough open land
- Rough open land with scattered trees
- Forest: easy running
- Forest: slow running
- Undergrowth: slow running
- Forest: difficult to run
- Undergrowth: difficult to run
- Vegetation: very difficult to run, impassable
- Forest runnable in one direction
- Orchard
- Vineyard
- Distinct cultivation boundary
- Cultivated land
- Distinct vegetation boundary
- Indistinct vegetation boundary
- Special vegetation feature

### Overprinting symbols

- Start
- Control point
- Control number
- Line
- Marked route
- Finish
- Uncrossable boundary
- Crossing point
- Out-of-bounds area
- Dangerous area
- Forbidden route
- First aid point
- Refreshment point

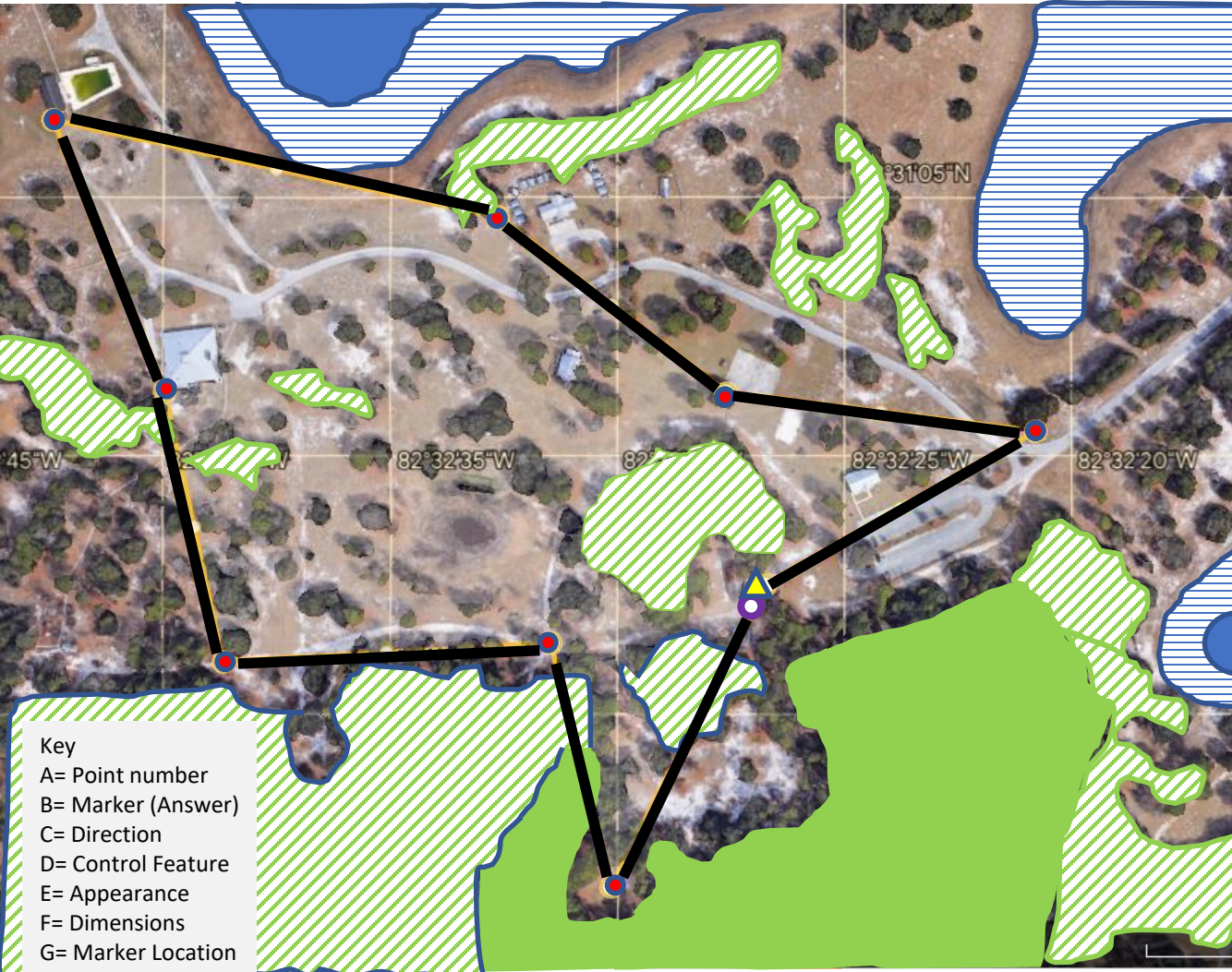
### Technical symbols

- Magnetic north line
- Registration marks
- Spot height

© Simon Errington 2007.  
Copies of these map symbols and of the IOF pictorial control descriptions can be downloaded from [www.maprunner.co.uk](http://www.maprunner.co.uk)  
The full ISOM 2000 specification is available from [www.orienteeing.org](http://www.orienteeing.org)



# CARD 3

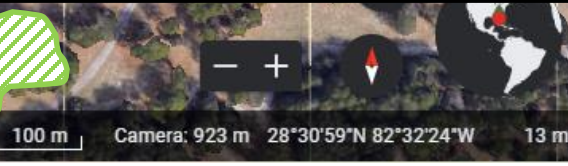


A B C D E F G H

Location: SANDHILL

| Course Name<br>CARD 3 |   |     | Total Distance<br>1707 M |   |    | Max Elev<br>13 M |     |
|-----------------------|---|-----|--------------------------|---|----|------------------|-----|
| 1                     |   | 65  | /                        | Y |    | ○                | 180 |
| 2                     |   | 283 | △                        | ☼ | 3M |                  | 180 |
| 3                     |   | 312 | △                        | ☼ | 3M |                  | 170 |
| 4                     |   | 287 | ∞                        | — |    | ○                | 265 |
| 5                     |   | 162 | ■                        | ■ |    | L                | 170 |
| 6                     |   | 172 | /                        | Y |    | ○                | 165 |
| 7                     |   | 90  | /                        | Y |    | ○                | 185 |
| 8                     |   | 169 | ◇                        | ■ |    | ○                | 145 |
| 9                     | S | 28  | ■                        | ■ |    | <                | 180 |

Key  
 A= Point number  
 B= Marker (Answer)  
 C= Direction  
 D= Control Feature  
 E= Appearance  
 F= Dimensions  
 G= Marker Location  
 H= Distance



**Column C**  
(which one of several)

|  |                    |
|--|--------------------|
|  | upper              |
|  | lower              |
|  | middle             |
|  | most north-eastern |

**Column D**  
(the control feature)

|  |                  |
|--|------------------|
|  | carthbank        |
|  | quarry           |
|  | earth wall       |
|  | terrace          |
|  | spur             |
|  | re-entrant       |
|  | gully            |
|  | hill             |
|  | knoll            |
|  | saddle           |
|  | depression       |
|  | small depression |
|  | pit              |
|  | anthill          |
|  | platform*        |
|  | crag/cliff       |
|  | boulder          |

|  |                          |
|--|--------------------------|
|  | rock pillar              |
|  | group of boulders        |
|  | boulder field            |
|  | stony ground             |
|  | cave                     |
|  | narrow passage           |
|  | bare rock                |
|  | lake                     |
|  | pond                     |
|  | waterhole/wet pit        |
|  | stream                   |
|  | ditch*                   |
|  | dry ditch/small gully    |
|  | marsh                    |
|  | firm ground in marsh     |
|  | narrow marsh             |
|  | minor water channel      |
|  | well                     |
|  | spring/source            |
|  | water tank, water trough |
|  | open land                |
|  | semi-open land           |
|  | forest corner            |
|  | clearing                 |

|  |                     |
|--|---------------------|
|  | vegetation boundary |
|  | thicket             |
|  | linear thicket      |
|  | distinctive tree    |
|  | distinctive tree*   |
|  | copse               |
|  | copse*              |
|  | root stock          |
|  | road                |
|  | track/path          |
|  | ride                |
|  | wall                |
|  | fence               |
|  | telegraph pole      |
|  | power line          |
|  | footbridge          |
|  | building            |
|  | ruin                |
|  | tower               |
|  | crossing point      |
|  | shooting platform   |
|  | fodder rack         |
|  | tunnel              |
|  | paved area          |

|  |                                      |
|--|--------------------------------------|
|  | pipeline                             |
|  | charcoal burning ground              |
|  | sculpture                            |
|  | building pass through                |
|  | stairway                             |
|  | boundary stone/cairn                 |
|  | broken ground                        |
|  | special item (meaning will be given) |
|  | special item*                        |

**Column E**  
(appearance)

|  |            |
|--|------------|
|  | low        |
|  | shallow    |
|  | deep       |
|  | ruined     |
|  | overgrown  |
|  | open       |
|  | stony      |
|  | marshy     |
|  | sandy      |
|  | coniferous |
|  | deciduous  |

**Column F**  
(dimensions)

|       |  |
|-------|--|
| 2.5   | feature height                                   |
| 8 x 4 | horizontal dimensions                            |
| 0.5   | height of feature on slope                       |
| 3.0   |  |
| 2.0   | heights of two features with control between the |
| 3.0   |  |

**Column G**  
(marker location)

|  |                    |
|--|--------------------|
|  | NE side            |
|  | E edge             |
|  | W corner (inside)  |
|  | W corner (outside) |
|  | bend               |
|  | NW tip             |
|  | N part             |
|  | S end              |
|  | upper part         |
|  | lower part         |
|  | between            |
|  | top                |
|  | beneath            |
|  | foot (no dir.)     |
|  | NE foot            |

**Column H**  
(other information)

|  |                |
|--|----------------|
|  | drinks         |
|  | radio control  |
|  | manned control |
|  | first aid      |

Columns D-F or D-G may also contain, for example:

|  |                        |
|--|------------------------|
|  | road junction          |
|  | track/stream crossing  |
|  | between hill and knoll |
|  | between boulders       |

Compass directions are mentioned in some of the above descriptions. Similar symbols exist for directions not shown.

\*non-IOF symbol.

# IOF Orienteering Map Symbols

### Land forms

- Contour
- Index contour
- Form line
- Slope line
- Contour value
- Earth bank
- Earth wall
- Small earth wall
- Erosion gully
- Small erosion gully
- Knoll
- Small knoll
- Elongated knoll
- Depression
- Small depression
- Pit
- Broken ground
- Special land form feature

### Water and marsh

- Lake
- Pond
- Waterhole
- Uncrossable river
- Crossable watercourse
- Crossable small watercourse
- Minor water channel
- Narrow marsh
- Uncrossable marsh
- Marsh
- Indistinct marsh
- Well
- Spring
- Special water feature

### Rock and boulders

- Impassable cliff
- Rock pillars/cliffs
- Passable rock face
- Rocky pit
- Cave
- Boulder
- Large boulder
- Boulder field
- Boulder cluster
- Stony ground
- Open sandy ground
- Bare rock

### Man-made features

- Motorway
- Major road
- Minor road
- Road
- Vehicle track
- Footpath
- Small path
- Less distinct small path
- Narrow ride
- Visible path junction
- Indistinct junction
- Footbridge
- Crossing point with bridge
- Crossing point without bridge
- Railway
- Power line
- Major power line
- Tunnel
- Stone wall
- Ruined stone wall
- High stone wall
- Fence
- Ruined fence
- High fence
- Crossing point
- Building
- Settlement
- Permanently out of bounds
- Paved area
- Ruin
- Firing range
- Grave
- Crossable pipeline
- Uncrossable pipeline
- High tower
- Small tower
- Cairn
- Fodder rack
- Special man-made feature

### Vegetation

- Open land
- Open land with scattered trees
- Rough open land
- Rough open land with scattered trees
- Forest: easy running
- Forest: slow running
- Undergrowth: slow running
- Forest: difficult to run
- Undergrowth: difficult to run
- Vegetation: very difficult to run, impassable
- Forest runnable in one direction
- Orchard
- Vineyard
- Distinct cultivation boundary
- Cultivated land
- Distinct vegetation boundary
- Indistinct vegetation boundary
- Special vegetation feature

### Overprinting symbols

- Start
- Control point
- Control number
- Line
- Marked route
- Finish
- Uncrossable boundary
- Crossing point
- Out-of-bounds area
- Dangerous area
- Forbidden route
- First aid point
- Refreshment point

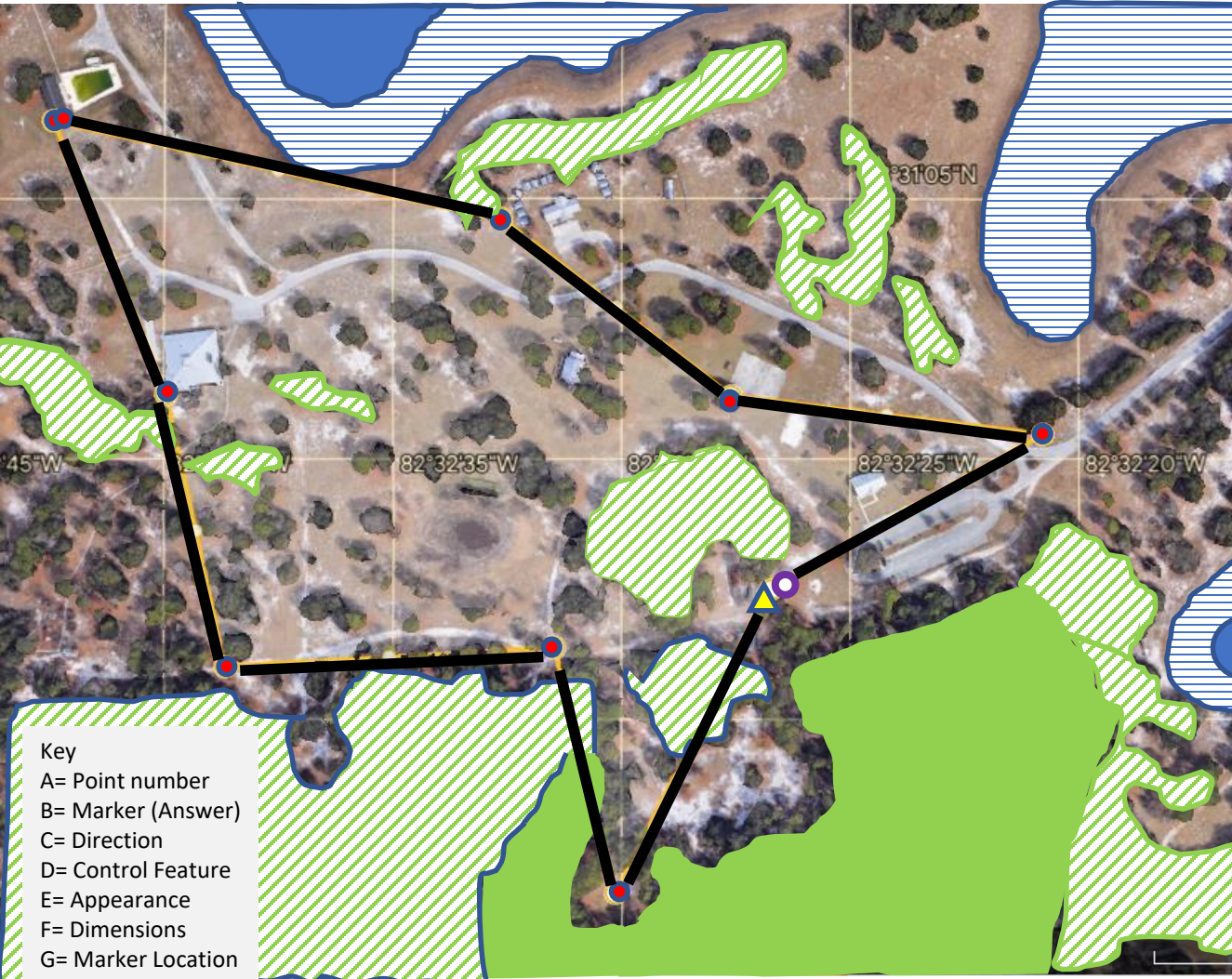
### Technical symbols

- Magnetic north line
- Registration marks
- Spot height

© Simon Errington 2007.  
Copies of these map symbols and of the IOF pictorial control descriptions can be downloaded from [www.maprunner.co.uk](http://www.maprunner.co.uk)  
The full ISOM 2000 specification is available from [www.orienteeing.org](http://www.orienteeing.org)



# CARD 4



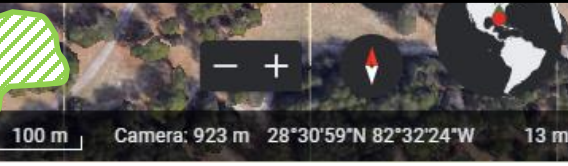
Key  
 A= Point number  
 B= Marker (Answer)  
 C= Direction  
 D= Control Feature  
 E= Appearance  
 F= Dimensions  
 G= Marker Location  
 H= Distance

A B C D E F G H

Location: SANDHILL

| Course Name<br>CARD 4 |   |     | Total Distance<br>1707 M |   |    | Max Elev<br>13 M |     |
|-----------------------|---|-----|--------------------------|---|----|------------------|-----|
| 1                     |   | 208 | ◇                        | ■ |    | ○                | 180 |
| 2                     |   | 349 | /                        | Y |    | ○                | 145 |
| 3                     |   | 270 | /                        | Y |    | ○                | 185 |
| 4                     |   | 352 | ■                        | ■ |    | └                | 165 |
| 5                     |   | 342 | ∩                        | ∩ |    | ○                | 170 |
| 6                     |   | 107 | △                        | ☼ | 3M |                  | 265 |
| 7                     |   | 132 | △                        | ☼ | 3M |                  | 170 |
| 8                     |   | 103 | /                        | Y |    | ○                | 180 |
| 9                     | S | 208 | ■                        | ■ |    | <                | 180 |

○ - - - 180 M - - - → ○



**Column C**  
(which one of several)

|  |                    |
|--|--------------------|
|  | upper              |
|  | lower              |
|  | middle             |
|  | most north-eastern |
|  | rock pillar        |
|  | group of boulders  |
|  | boulder field      |
|  | stony ground       |
|  | cave               |
|  | narrow passage     |

**Column D**  
(the control feature)

|  |                          |
|--|--------------------------|
|  | carthbank                |
|  | quarry                   |
|  | earth wall               |
|  | terrace                  |
|  | spur                     |
|  | re-entrant               |
|  | gully                    |
|  | hill                     |
|  | knoll                    |
|  | saddle                   |
|  | depression               |
|  | small depression         |
|  | pit                      |
|  | anthill                  |
|  | platform*                |
|  | crag/cliff               |
|  | boulder                  |
|  | lake                     |
|  | pond                     |
|  | waterhole/wet pit        |
|  | stream                   |
|  | ditch*                   |
|  | dry ditch/small gully    |
|  | marsh                    |
|  | firm ground in marsh     |
|  | narrow marsh             |
|  | minor water channel      |
|  | well                     |
|  | spring/source            |
|  | water tank, water trough |
|  | open land                |
|  | semi-open land           |
|  | forest corner            |
|  | clearing                 |

Columns D-F or D-G may also contain, for example:

|  |                       |
|--|-----------------------|
|  | road junction         |
|  | track/stream crossing |

|  |                        |
|--|------------------------|
|  | between hill and knoll |
|  | between boulders       |

Compass directions are mentioned in some of the above descriptions. Similar symbols exist for directions not shown.

\*non-IOF symbol.

|  |                     |
|--|---------------------|
|  | vegetation boundary |
|  | thicket             |
|  | linear thicket      |
|  | distinctive tree    |
|  | distinctive tree*   |
|  | copse               |
|  | copse*              |
|  | root stock          |
|  | road                |
|  | track/path          |
|  | ride                |
|  | wall                |

**Column E**  
(appearance)

|  |            |
|--|------------|
|  | low        |
|  | shallow    |
|  | deep       |
|  | ruined     |
|  | overgrown  |
|  | open       |
|  | stony      |
|  | marshy     |
|  | sandy      |
|  | coniferous |
|  | deciduous  |

|  |                |
|--|----------------|
|  | drinks         |
|  | radio control  |
|  | manned control |
|  | first aid      |

**Column F**  
(dimensions)

|  |  |
|--|--|
|  | 2.5 feature height                                   |
|  | 8 x 4 horizontal dimensions                          |
|  | 0.5 height of feature on slope                       |
|  | 2.0 heights of two features with control between the |
|  | 3.0 heights of two features with control between the |

**Column G**  
(marker location)

|  |                    |
|--|--------------------|
|  | NE side            |
|  | E edge             |
|  | W corner (inside)  |
|  | W corner (outside) |
|  | bend               |
|  | NW tip             |
|  | N part             |
|  | S end              |
|  | upper part         |
|  | lower part         |
|  | between            |
|  | top                |
|  | beneath            |
|  | foot (no dir.)     |
|  | NE foot            |

**Column H**  
(other information)

|  |                |
|--|----------------|
|  | drinks         |
|  | radio control  |
|  | manned control |
|  | first aid      |

# IOF Orienteering Map Symbols

**Land forms**

|  |                           |
|--|---------------------------|
|  | Contour                   |
|  | Index contour             |
|  | Form line                 |
|  | Slope line                |
|  | Contour value             |
|  | Earth bank                |
|  | Earth wall                |
|  | Small earth wall          |
|  | Erosion gully             |
|  | Small erosion gully       |
|  | Knoll                     |
|  | Small knoll               |
|  | Elongated knoll           |
|  | Depression                |
|  | Small depression          |
|  | Pit                       |
|  | Broken ground             |
|  | Special land form feature |

**Water and marsh**

|  |                             |
|--|-----------------------------|
|  | Lake                        |
|  | Pond                        |
|  | Waterhole                   |
|  | Uncrossable river           |
|  | Crossable watercourse       |
|  | Crossable small watercourse |
|  | Minor water channel         |
|  | Narrow marsh                |
|  | Uncrossable marsh           |
|  | Marsh                       |
|  | Indistinct marsh            |
|  | Well                        |
|  | Spring                      |
|  | Special water feature       |

**Rock and boulders**

|  |                     |
|--|---------------------|
|  | Impassable cliff    |
|  | Rock pillars/cliffs |
|  | Passable rock face  |
|  | Rocky pit           |
|  | Cave                |
|  | Boulder             |
|  | Large boulder       |
|  | Boulder field       |
|  | Boulder cluster     |
|  | Stony ground        |
|  | Open sandy ground   |
|  | Bare rock           |

**Man-made features**

|  |                               |
|--|-------------------------------|
|  | Motorway                      |
|  | Major road                    |
|  | Minor road                    |
|  | Road                          |
|  | Vehicle track                 |
|  | Footpath                      |
|  | Small path                    |
|  | Less distinct small path      |
|  | Narrow ride                   |
|  | Visible path junction         |
|  | Indistinct junction           |
|  | Footbridge                    |
|  | Crossing point with bridge    |
|  | Crossing point without bridge |
|  | Railway                       |
|  | Power line                    |
|  | Major power line              |
|  | Tunnel                        |
|  | Stone wall                    |
|  | Ruined stone wall             |
|  | High stone wall               |
|  | Fence                         |
|  | Ruined fence                  |
|  | High fence                    |
|  | Crossing point Building       |
|  | Settlement                    |
|  | Permanently out of bounds     |
|  | Paved area                    |
|  | Ruin                          |
|  | Firing range                  |
|  | Grave                         |
|  | Crossable pipeline            |
|  | Uncrossable pipeline          |
|  | High tower                    |
|  | Small tower                   |
|  | Cairn                         |
|  | Fodder rack                   |
|  | Special man-made feature      |

**Technical symbols**

|  |                     |
|--|---------------------|
|  | Magnetic north line |
|  | Registration marks  |
|  | Spot height         |

**Vegetation**

|  |   |
|--|---|
|  | Open land                                     |
|  | Open land with scattered trees                |
|  | Rough open land                               |
|  | Rough open land with scattered trees          |
|  | Forest: easy running                          |
|  | Forest: slow running                          |
|  | Undergrowth: slow running                     |
|  | Forest: difficult to run                      |
|  | Undergrowth: difficult to run                 |
|  | Vegetation: very difficult to run, impassable |
|  | Forest runnable in one direction              |
|  | Orchard                                       |
|  | Vineyard                                      |
|  | Distinct cultivation boundary                 |
|  | Cultivated land                               |
|  | Distinct vegetation boundary                  |
|  | Indistinct vegetation boundary                |
|  | Special vegetation feature                    |

**Overprinting symbols**

|  |                      |
|--|----------------------|
|  | Start                |
|  | Control point        |
|  | Control number       |
|  | Line                 |
|  | Marked route         |
|  | Finish               |
|  | Uncrossable boundary |
|  | Crossing point       |
|  | Out-of-bounds area   |
|  | Dangerous area       |
|  | Forbidden route      |
|  | First aid point      |
|  | Refreshment point    |

© Simon Errington 2007.  
Copies of these map symbols and of the IOF pictorial control descriptions can be downloaded from [www.maprunner.co.uk](http://www.maprunner.co.uk)  
The full ISOM 2000 specification is available from [www.orienteering.org](http://www.orienteering.org)



# CARD 5



Location: SANDHILL

| Course Name | Total Distance | Max Elev |
|-------------|----------------|----------|
| CARD 5      | 1752 M         | 13 M     |
| 1           | 48             | 80       |
| 2           | 66             | 290      |
| 3           | 203            | 245      |
| 4           | 336            | 145      |
| 5           | 283            | 170      |
| 6           | 246            | 340      |
| 7           | 124            | 260      |
| 8           | 28             | 180      |

180 M

Camera: 923 m 28°30'59"N 82°32'24"W 13 m

**Column C**  
(which one of several)

|  |                    |
|--|--------------------|
|  | upper              |
|  | lower              |
|  | middle             |
|  | most north-eastern |

**Column D**  
(the control feature)

|  |                  |
|--|------------------|
|  | carthbank        |
|  | quarry           |
|  | earth wall       |
|  | terrace          |
|  | spur             |
|  | re-entrant       |
|  | gully            |
|  | hill             |
|  | knoll            |
|  | saddle           |
|  | depression       |
|  | small depression |
|  | pit              |
|  | anthill          |
|  | platform*        |
|  | crag/cliff       |
|  | boulder          |

|  |                          |
|--|--------------------------|
|  | rock pillar              |
|  | group of boulders        |
|  | boulder field            |
|  | stony ground             |
|  | cave                     |
|  | narrow passage           |
|  | bare rock                |
|  | lake                     |
|  | pond                     |
|  | waterhole/wet pit        |
|  | stream                   |
|  | ditch*                   |
|  | dry ditch/small gully    |
|  | marsh                    |
|  | firm ground in marsh     |
|  | narrow marsh             |
|  | minor water channel      |
|  | well                     |
|  | spring/source            |
|  | water tank, water trough |
|  | open land                |
|  | semi-open land           |
|  | forest corner            |
|  | clearing                 |

|  |                     |
|--|---------------------|
|  | vegetation boundary |
|  | thicket             |
|  | linear thicket      |
|  | distinctive tree    |
|  | distinctive tree*   |
|  | copse               |
|  | copse*              |
|  | root stock          |
|  | road                |
|  | track/path          |
|  | ride                |
|  | wall                |
|  | fence               |
|  | telegraph pole      |
|  | power line          |
|  | footbridge          |
|  | building            |
|  | ruin                |
|  | tower               |
|  | crossing point      |
|  | shooting platform   |
|  | fodder rack         |
|  | tunnel              |
|  | paved area          |

|  |                                      |
|--|--------------------------------------|
|  | pipeline                             |
|  | charcoal burning ground              |
|  | sculpture                            |
|  | building pass through                |
|  | stairway                             |
|  | boundary stone/cairn                 |
|  | broken ground                        |
|  | special item (meaning will be given) |
|  | special item*                        |

**Column E**  
(appearance)

|  |            |
|--|------------|
|  | low        |
|  | shallow    |
|  | deep       |
|  | ruined     |
|  | overgrown  |
|  | open       |
|  | stony      |
|  | marshy     |
|  | sandy      |
|  | coniferous |
|  | deciduous  |

**Column F**  
(dimensions)

|           |  |
|-----------|--|
| 2.5       | feature height                                   |
| 8 x 4     | horizontal dimensions                            |
| 0.5 / 3.0 | height of feature on slope                       |
| 2.0 / 3.0 | heights of two features with control between the |

**Column G**  
(marker location)

|  |                    |
|--|--------------------|
|  | NE side            |
|  | E edge             |
|  | W corner (inside)  |
|  | W corner (outside) |
|  | bend               |
|  | NW tip             |
|  | N part             |
|  | S end              |
|  | upper part         |
|  | lower part         |
|  | between            |
|  | top                |
|  | beneath            |
|  | foot (no dir.)     |
|  | NE foot            |

**Column H**  
(other information)

|  |                |
|--|----------------|
|  | drinks         |
|  | radio control  |
|  | manned control |
|  | first aid      |

Columns D-F or D-G may also contain, for example:

|  |                        |
|--|------------------------|
|  | road junction          |
|  | track/stream crossing  |
|  | between hill and knoll |
|  | between boulders       |

Compass directions are mentioned in some of the above descriptions. Similar symbols exist for directions not shown.

\*non-IOF symbol.

# IOF Orienteering Map Symbols

### Land forms

- Contour
- Index contour
- Form line
- Slope line
- Contour value
- Earth bank
- Earth wall
- Small earth wall
- Erosion gully
- Small erosion gully
- Knoll
- Small knoll
- Elongated knoll
- Depression
- Small depression
- Pit
- Broken ground
- Special land form feature

### Water and marsh

- Lake
- Pond
- Waterhole
- Uncrossable river
- Crossable watercourse
- Crossable small watercourse
- Minor water channel
- Narrow marsh
- Uncrossable marsh
- Marsh
- Indistinct marsh
- Well
- Spring
- Special water feature

### Rock and boulders

- Impassable cliff
- Rock pillars/cliffs
- Passable rock face
- Rocky pit
- Cave
- Boulder
- Large boulder
- Boulder field
- Boulder cluster
- Stony ground
- Open sandy ground
- Bare rock

### Man-made features

- Motorway
- Major road
- Minor road
- Road
- Vehicle track
- Footpath
- Small path
- Less distinct small path
- Narrow ride
- Visible path junction
- Indistinct junction
- Footbridge
- Crossing point with bridge
- Crossing point without bridge
- Railway
- Power line
- Major power line
- Tunnel
- Stone wall
- Ruined stone wall
- High stone wall
- Fence
- Ruined fence
- High fence
- Crossing point
- Building
- Settlement
- Permanently out of bounds
- Paved area
- Ruin
- Firing range
- Grave
- Crossable pipeline
- Uncrossable pipeline
- High tower
- Small tower
- Cairn
- Fodder rack
- Special man-made feature

### Vegetation

- Open land
- Open land with scattered trees
- Rough open land
- Rough open land with scattered trees
- Forest: easy running
- Forest: slow running
- Undergrowth: slow running
- Forest: difficult to run
- Undergrowth: difficult to run
- Vegetation: very difficult to run, impassable
- Forest runnable in one direction
- Orchard
- Vineyard
- Distinct cultivation boundary
- Cultivated land
- Distinct vegetation boundary
- Indistinct vegetation boundary
- Special vegetation feature

### Overprinting symbols

- Start
- Control point
- Control number
- Line
- Marked route
- Finish
- Uncrossable boundary
- Crossing point
- Out-of-bounds area
- Dangerous area
- Forbidden route
- First aid point
- Refreshment point

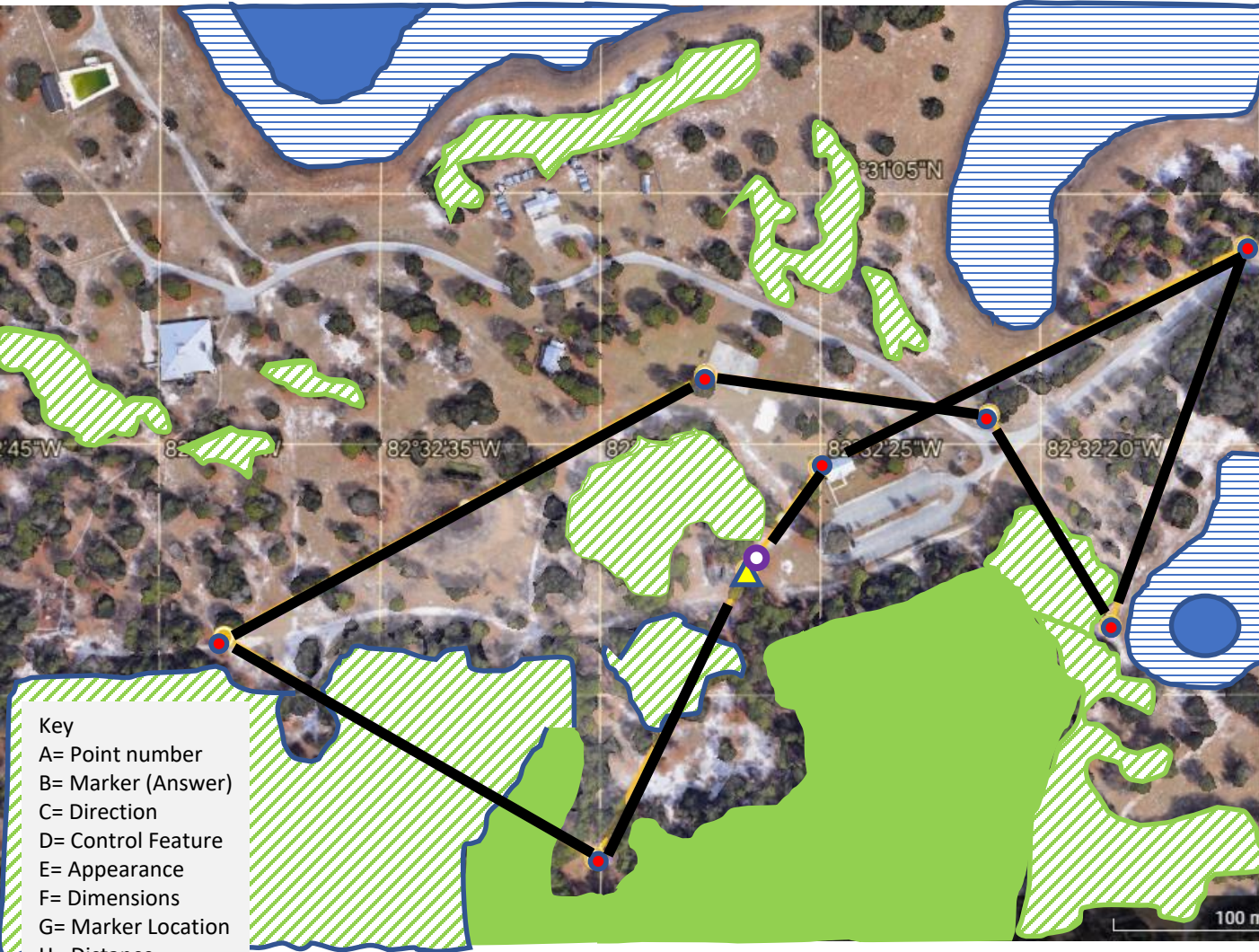
### Technical symbols

- Magnetic north line
- Registration marks
- Spot height

© Simon Errington 2007.  
Copies of these map symbols and of the IOF pictorial control descriptions can be downloaded from [www.maprunner.co.uk](http://www.maprunner.co.uk)  
The full ISOM 2000 specification is available from [www.orienteering.org](http://www.orienteering.org)



# CARD 6



Location: SANDHILL

| Course Name | Total Distance | Max Elev |
|-------------|----------------|----------|
| CARD 6      | 1752 M         | 13 M     |

| A | B     | C | D | E  | F | G | H   |
|---|-------|---|---|----|---|---|-----|
| 1 | 208   | ◇ | ▨ |    | ○ |   | 180 |
| 2 | 304   | / | ∟ |    | ○ |   | 260 |
| 3 | 63    | ▽ | ☼ | 3M |   |   | 340 |
| 4 | 103   | / | ∟ |    | ○ |   | 170 |
| 5 | 155   | ■ | ▨ |    | ∟ |   | 145 |
| 6 | 23    | / | ☼ | 3M |   |   | 245 |
| 7 | 246   | ■ | ▨ |    | ∟ |   | 290 |
| 8 | S 220 | ■ | ▨ |    | < |   | 80  |

80 M

Camera: 923 m 28°30'59"N 82°32'24"W 13 m

**Column C**  
(which one of several)

|  |                    |
|--|--------------------|
|  | upper              |
|  | lower              |
|  | middle             |
|  | most north-eastern |

**Column D**  
(the control feature)

|  |                  |
|--|------------------|
|  | carthbank        |
|  | quarry           |
|  | earth wall       |
|  | terrace          |
|  | spur             |
|  | re-entrant       |
|  | gully            |
|  | hill             |
|  | knoll            |
|  | saddle           |
|  | depression       |
|  | small depression |
|  | pit              |
|  | anthill          |
|  | platform*        |
|  | crag/cliff       |
|  | boulder          |

|  |                          |
|--|--------------------------|
|  | rock pillar              |
|  | group of boulders        |
|  | boulder field            |
|  | stony ground             |
|  | cave                     |
|  | narrow passage           |
|  | bare rock                |
|  | lake                     |
|  | pond                     |
|  | waterhole/wet pit        |
|  | stream                   |
|  | ditch*                   |
|  | dry ditch/small gully    |
|  | marsh                    |
|  | firm ground in marsh     |
|  | narrow marsh             |
|  | minor water channel      |
|  | well                     |
|  | spring/source            |
|  | water tank, water trough |
|  | open land                |
|  | semi-open land           |
|  | forest corner            |
|  | clearing                 |

|  |                     |
|--|---------------------|
|  | vegetation boundary |
|  | thicket             |
|  | linear thicket      |
|  | distinctive tree    |
|  | distinctive tree*   |
|  | copse               |
|  | copse*              |
|  | root stock          |
|  | road                |
|  | track/path          |
|  | ride                |
|  | wall                |
|  | fence               |
|  | telegraph pole      |
|  | power line          |
|  | footbridge          |
|  | building            |
|  | ruin                |
|  | tower               |
|  | crossing point      |
|  | shooting platform   |
|  | fodder rack         |
|  | tunnel              |
|  | paved area          |

|  |                                      |
|--|--------------------------------------|
|  | pipeline                             |
|  | charcoal burning ground              |
|  | sculpture                            |
|  | building pass through                |
|  | stairway                             |
|  | boundary stone/cairn                 |
|  | broken ground                        |
|  | special item (meaning will be given) |
|  | special item*                        |

**Column E**  
(appearance)

|  |            |
|--|------------|
|  | low        |
|  | shallow    |
|  | deep       |
|  | ruined     |
|  | overgrown  |
|  | open       |
|  | stony      |
|  | marshy     |
|  | sandy      |
|  | coniferous |
|  | deciduous  |

**Column F**  
(dimensions)

|       |  |
|-------|--|
| 2.5   | feature height                                   |
| 8 x 4 | horizontal dimensions                            |
| 0.5   | height of feature on slope                       |
| 3.0   |  |
| 2.0   | heights of two features with control between the |
| 3.0   |  |

**Column G**  
(marker location)

|  |                    |
|--|--------------------|
|  | NE side            |
|  | E edge             |
|  | W corner (inside)  |
|  | W corner (outside) |
|  | bend               |
|  | NW tip             |
|  | N part             |
|  | S end              |
|  | upper part         |
|  | lower part         |
|  | between            |
|  | top                |
|  | beneath            |
|  | foot (no dir.)     |
|  | NE foot            |

**Column H**  
(other information)

|  |                |
|--|----------------|
|  | drinks         |
|  | radio control  |
|  | manned control |
|  | first aid      |

Columns D-F or D-G may also contain, for example:

|  |                        |
|--|------------------------|
|  | road junction          |
|  | track/stream crossing  |
|  | between hill and knoll |
|  | between boulders       |

Compass directions are mentioned in some of the above descriptions. Similar symbols exist for directions not shown.

\*non-IOF symbol.

# IOF Orienteering Map Symbols

### Land forms

- Contour
- Index contour
- Form line
- Slope line
- Contour value
- Earth bank
- Earth wall
- Small earth wall
- Erosion gully
- Small erosion gully
- Knoll
- Small knoll
- Elongated knoll
- Depression
- Small depression
- Pit
- Broken ground
- Special land form feature

### Water and marsh

- Lake
- Pond
- Waterhole
- Uncrossable river
- Crossable watercourse
- Crossable small watercourse
- Minor water channel
- Narrow marsh
- Uncrossable marsh
- Marsh
- Indistinct marsh
- Well
- Spring
- Special water feature

### Rock and boulders

- Impassable cliff
- Rock pillars/cliffs
- Passable rock face
- Rocky pit
- Cave
- Boulder
- Large boulder
- Boulder field
- Boulder cluster
- Stony ground
- Open sandy ground
- Bare rock

### Man-made features

- Motorway
- Major road
- Minor road
- Road
- Vehicle track
- Footpath
- Small path
- Less distinct small path
- Narrow ride
- Visible path junction
- Indistinct junction
- Footbridge
- Crossing point with bridge
- Crossing point without bridge
- Railway
- Power line
- Major power line
- Tunnel
- Stone wall
- Ruined stone wall
- High stone wall
- Fence
- Ruined fence
- High fence
- Crossing point
- Building
- Settlement
- Permanently out of bounds
- Paved area
- Ruin
- Firing range
- Grave
- Crossable pipeline
- Uncrossable pipeline
- High tower
- Small tower
- Cairn
- Fodder rack
- Special man-made feature

### Vegetation

- Open land
- Open land with scattered trees
- Rough open land
- Rough open land with scattered trees
- Forest: easy running
- Forest: slow running
- Undergrowth: slow running
- Forest: difficult to run
- Undergrowth: difficult to run
- Vegetation: very difficult to run, impassable
- Forest runnable in one direction
- Orchard
- Vineyard
- Distinct cultivation boundary
- Cultivated land
- Distinct vegetation boundary
- Indistinct vegetation boundary
- Special vegetation feature

### Overprinting symbols

- Start
- Control point
- Control number
- Line
- Marked route
- Finish
- Uncrossable boundary
- Crossing point
- Out-of-bounds area
- Dangerous area
- Forbidden route
- First aid point
- Refreshment point

### Technical symbols

- Magnetic north line
- Registration marks
- Spot height

© Simon Errington 2007.  
Copies of these map symbols and of the IOF pictorial control descriptions can be downloaded from [www.maprunner.co.uk](http://www.maprunner.co.uk)  
The full ISOM 2000 specification is available from [www.orienteeing.org](http://www.orienteeing.org)



# CARD 7

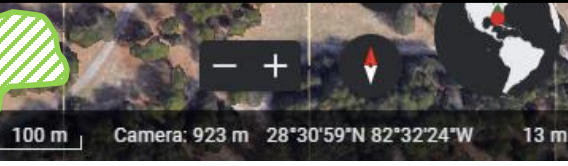
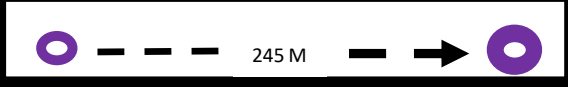


Key  
 A= Point number  
 B= Marker (Answer)  
 C= Direction  
 D= Control Feature  
 E= Appearance  
 F= Dimensions  
 G= Marker Location  
 H= Distance

A B C D E F G H

Location: SANDHILL

| Course Name<br>CARD 7 |   |     | Total Distance<br>1708 M |   |    | Max Elev<br>13 M |     |
|-----------------------|---|-----|--------------------------|---|----|------------------|-----|
| 1                     |   | 208 | ◇                        | ▣ |    | ○                | 180 |
| 2                     |   | 349 | /                        | Y |    | ○                | 145 |
| 3                     |   | 318 | ■                        | ▣ |    | ∧                | 270 |
| 4                     |   | 327 | ∩                        | ∪ |    | ○                | 150 |
| 5                     |   | 167 | /                        | Y |    | ○                | 330 |
| 6                     |   | 44  | △                        | ☼ | 3M |                  | 340 |
| 7                     | S | 163 | ■                        | ▣ |    | <                | 245 |



**Column C**  
(which one of several)

|  |                    |
|--|--------------------|
|  | upper              |
|  | lower              |
|  | middle             |
|  | most north-eastern |

**Column D**  
(the control feature)

|  |                  |
|--|------------------|
|  | carthbank        |
|  | quarry           |
|  | earth wall       |
|  | terrace          |
|  | spur             |
|  | re-entrant       |
|  | gully            |
|  | hill             |
|  | knoll            |
|  | saddle           |
|  | depression       |
|  | small depression |
|  | pit              |
|  | anthill          |
|  | platform*        |
|  | crag/cliff       |
|  | boulder          |

|  |                          |
|--|--------------------------|
|  | rock pillar              |
|  | group of boulders        |
|  | boulder field            |
|  | stony ground             |
|  | cave                     |
|  | narrow passage           |
|  | bare rock                |
|  | lake                     |
|  | pond                     |
|  | waterhole/wet pit        |
|  | stream                   |
|  | ditch*                   |
|  | dry ditch/small gully    |
|  | marsh                    |
|  | firm ground in marsh     |
|  | narrow marsh             |
|  | minor water channel      |
|  | well                     |
|  | spring/source            |
|  | water tank, water trough |
|  | open land                |
|  | semi-open land           |
|  | forest corner            |
|  | clearing                 |

|  |                     |
|--|---------------------|
|  | vegetation boundary |
|  | thicket             |
|  | linear thicket      |
|  | distinctive tree    |
|  | distinctive tree*   |
|  | copse               |
|  | copse*              |
|  | root stock          |
|  | road                |
|  | track/path          |
|  | ride                |
|  | wall                |
|  | fence               |
|  | telegraph pole      |
|  | power line          |
|  | footbridge          |
|  | building            |
|  | ruin                |
|  | tower               |
|  | crossing point      |
|  | shooting platform   |
|  | fodder rack         |
|  | tunnel              |
|  | paved area          |

|  |                                      |
|--|--------------------------------------|
|  | pipeline                             |
|  | charcoal burning ground              |
|  | sculpture                            |
|  | building pass through                |
|  | stairway                             |
|  | boundary stone/cairn                 |
|  | broken ground                        |
|  | special item (meaning will be given) |
|  | special item*                        |

**Column E**  
(appearance)

|  |            |
|--|------------|
|  | low        |
|  | shallow    |
|  | deep       |
|  | ruined     |
|  | overgrown  |
|  | open       |
|  | stony      |
|  | marshy     |
|  | sandy      |
|  | coniferous |
|  | deciduous  |

**Column F**  
(dimensions)

|       |  |
|-------|--|
| 2.5   | feature height                                   |
| 8 x 4 | horizontal dimensions                            |
| 0.5   | height of feature on slope                       |
| 3.0   |  |
| 2.0   | heights of two features with control between the |
| 3.0   |  |

**Column G**  
(marker location)

|  |                    |
|--|--------------------|
|  | NE side            |
|  | E edge             |
|  | W corner (inside)  |
|  | W corner (outside) |
|  | bend               |
|  | NW tip             |
|  | N part             |
|  | S end              |
|  | upper part         |
|  | lower part         |
|  | between            |
|  | top                |
|  | beneath            |
|  | foot (no dir.)     |
|  | NE foot            |

**Column H**  
(other information)

|  |                |
|--|----------------|
|  | drinks         |
|  | radio control  |
|  | manned control |
|  | first aid      |

Columns D-F or D-G may also contain, for example:

|  |                        |
|--|------------------------|
|  | road junction          |
|  | track/stream crossing  |
|  | between hill and knoll |
|  | between boulders       |

Compass directions are mentioned in some of the above descriptions. Similar symbols exist for directions not shown.

\*non-IOF symbol.

# IOF Orienteering Map Symbols

**Land forms**

|  |                           |
|--|---------------------------|
|  | Contour                   |
|  | Index contour             |
|  | Form line                 |
|  | Slope line                |
|  | Contour value             |
|  | Earth bank                |
|  | Earth wall                |
|  | Small earth wall          |
|  | Erosion gully             |
|  | Small erosion gully       |
|  | Knoll                     |
|  | Small knoll               |
|  | Elongated knoll           |
|  | Depression                |
|  | Small depression          |
|  | Pit                       |
|  | Broken ground             |
|  | Special land form feature |

**Water and marsh**

|  |                             |
|--|-----------------------------|
|  | Lake                        |
|  | Pond                        |
|  | Waterhole                   |
|  | Uncrossable river           |
|  | Crossable watercourse       |
|  | Crossable small watercourse |
|  | Minor water channel         |
|  | Narrow marsh                |
|  | Uncrossable marsh           |
|  | Marsh                       |
|  | Indistinct marsh            |
|  | Well                        |
|  | Spring                      |
|  | Special water feature       |

**Rock and boulders**

|  |                     |
|--|---------------------|
|  | Impassable cliff    |
|  | Rock pillars/cliffs |
|  | Passable rock face  |
|  | Rocky pit           |
|  | Cave                |
|  | Boulder             |
|  | Large boulder       |
|  | Boulder field       |
|  | Boulder cluster     |
|  | Stony ground        |
|  | Open sandy ground   |
|  | Bare rock           |

**Man-made features**

|  |                               |
|--|-------------------------------|
|  | Motorway                      |
|  | Major road                    |
|  | Minor road                    |
|  | Road                          |
|  | Vehicle track                 |
|  | Footpath                      |
|  | Small path                    |
|  | Less distinct small path      |
|  | Narrow ride                   |
|  | Visible path junction         |
|  | Indistinct junction           |
|  | Footbridge                    |
|  | Crossing point with bridge    |
|  | Crossing point without bridge |
|  | Railway                       |
|  | Power line                    |
|  | Major power line              |
|  | Tunnel                        |
|  | Stone wall                    |
|  | Ruined stone wall             |
|  | High stone wall               |
|  | Fence                         |
|  | Ruined fence                  |
|  | High fence                    |
|  | Crossing point Building       |
|  | Settlement                    |
|  | Permanently out of bounds     |
|  | Paved area                    |
|  | Ruin                          |
|  | Firing range                  |
|  | Grave                         |
|  | Crossable pipeline            |
|  | Uncrossable pipeline          |
|  | High tower                    |
|  | Small tower                   |
|  | Cairn                         |
|  | Fodder rack                   |
|  | Special man-made feature      |

**Technical symbols**

|  |                     |
|--|---------------------|
|  | Magnetic north line |
|  | Registration marks  |
|  | Spot height         |

**Vegetation**

|  |   |
|--|---|
|  | Open land                                     |
|  | Open land with scattered trees                |
|  | Rough open land                               |
|  | Rough open land with scattered trees          |
|  | Forest: easy running                          |
|  | Forest: slow running                          |
|  | Undergrowth: slow running                     |
|  | Forest: difficult to run                      |
|  | Undergrowth: difficult to run                 |
|  | Vegetation: very difficult to run, impassable |
|  | Forest runnable in one direction              |
|  | Orchard                                       |
|  | Vineyard                                      |
|  | Distinct cultivation boundary                 |
|  | Cultivated land                               |
|  | Distinct vegetation boundary                  |
|  | Indistinct vegetation boundary                |
|  | Special vegetation feature                    |

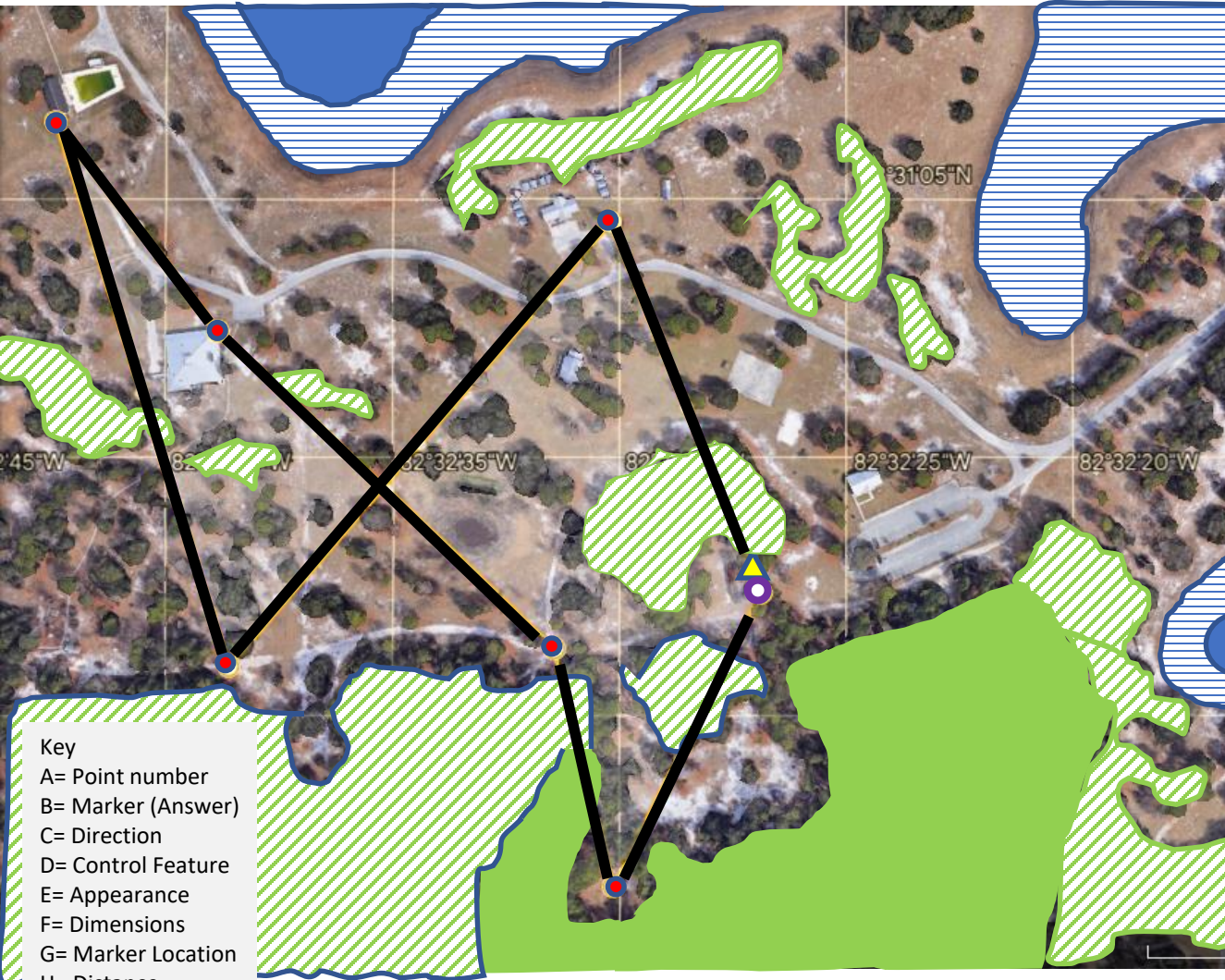
**Overprinting symbols**

|  |                      |
|--|----------------------|
|  | Start                |
|  | Control point        |
|  | Control number       |
|  | Line                 |
|  | Marked route         |
|  | Finish               |
|  | Uncrossable boundary |
|  | Crossing point       |
|  | Out-of-bounds area   |
|  | Dangerous area       |
|  | Forbidden route      |
|  | First aid point      |
|  | Refreshment point    |

© Simon Errington 2007.  
Copies of these map symbols and of the IOF pictorial control descriptions can be downloaded from [www.maprunner.co.uk](http://www.maprunner.co.uk)  
The full ISOM 2000 specification is available from [www.orienteeing.org](http://www.orienteeing.org)



# CARD 8

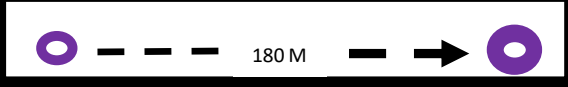


Key  
 A= Point number  
 B= Marker (Answer)  
 C= Direction  
 D= Control Feature  
 E= Appearance  
 F= Dimensions  
 G= Marker Location  
 H= Distance

A B C D E F G H

Location: SANDHILL

| Course Name |   | Total Distance |  |  | Max Elev |  |     |
|-------------|---|----------------|--|--|----------|--|-----|
| CARD 8      |   | 1708 M         |  |  | 13 M     |  |     |
| 1           |   | 348            |  |  | 3M       |  | 245 |
| 2           |   | 224            |  |  |          |  | 340 |
| 3           |   | 347            |  |  |          |  | 330 |
| 4           |   | 144            |  |  |          |  | 150 |
| 5           |   | 137            |  |  |          |  | 270 |
| 6           |   | 169            |  |  |          |  | 145 |
| 7           | S | 28             |  |  |          |  | 180 |



**Column C**  
(which one of several)

|  |                    |
|--|--------------------|
|  | upper              |
|  | lower              |
|  | middle             |
|  | most north-eastern |

**Column D**  
(the control feature)

|  |                  |
|--|------------------|
|  | carthbank        |
|  | quarry           |
|  | earth wall       |
|  | terrace          |
|  | spur             |
|  | re-entrant       |
|  | gully            |
|  | hill             |
|  | knoll            |
|  | saddle           |
|  | depression       |
|  | small depression |
|  | pit              |
|  | anthill          |
|  | platform*        |
|  | crag/cliff       |
|  | boulder          |

|  |                          |
|--|--------------------------|
|  | rock pillar              |
|  | group of boulders        |
|  | boulder field            |
|  | stony ground             |
|  | cave                     |
|  | narrow passage           |
|  | bare rock                |
|  | lake                     |
|  | pond                     |
|  | waterhole/wet pit        |
|  | stream                   |
|  | ditch*                   |
|  | dry ditch/small gully    |
|  | marsh                    |
|  | firm ground in marsh     |
|  | narrow marsh             |
|  | minor water channel      |
|  | well                     |
|  | spring/source            |
|  | water tank, water trough |
|  | open land                |
|  | semi-open land           |
|  | forest corner            |
|  | clearing                 |

|  |                     |
|--|---------------------|
|  | vegetation boundary |
|  | thicket             |
|  | linear thicket      |
|  | distinctive tree    |
|  | distinctive tree*   |
|  | copse               |
|  | copse*              |
|  | root stock          |
|  | road                |
|  | track/path          |
|  | ride                |
|  | wall                |
|  | fence               |
|  | telegraph pole      |
|  | power line          |
|  | footbridge          |
|  | building            |
|  | ruin                |
|  | tower               |
|  | crossing point      |
|  | shooting platform   |
|  | fodder rack         |
|  | tunnel              |
|  | paved area          |

|  |                                      |
|--|--------------------------------------|
|  | pipeline                             |
|  | charcoal burning ground              |
|  | sculpture                            |
|  | building pass through                |
|  | stairway                             |
|  | boundary stone/cairn                 |
|  | broken ground                        |
|  | special item (meaning will be given) |
|  | special item*                        |

**Column E**  
(appearance)

|  |            |
|--|------------|
|  | low        |
|  | shallow    |
|  | deep       |
|  | ruined     |
|  | overgrown  |
|  | open       |
|  | stony      |
|  | marshy     |
|  | sandy      |
|  | coniferous |
|  | deciduous  |

**Column F**  
(dimensions)

|           |   |
|-----------|---|
| 2.5       | feature height                                    |
| 8 x 4     | horizontal dimensions                             |
| 0.5 / 3.0 | height of feature on slope                        |
| 2.0 / 3.0 | heights of two features with control between them |

**Column G**  
(marker location)

|  |                    |
|--|--------------------|
|  | NE side            |
|  | E edge             |
|  | W corner (inside)  |
|  | W corner (outside) |
|  | bend               |
|  | NW tip             |
|  | N part             |
|  | S end              |
|  | upper part         |
|  | lower part         |
|  | between            |
|  | top                |
|  | beneath            |
|  | foot (no dir.)     |
|  | NE foot            |

**Column H**  
(other information)

|  |                |
|--|----------------|
|  | drinks         |
|  | radio control  |
|  | manned control |
|  | first aid      |

Columns D-F or D-G may also contain, for example:

|  |                        |
|--|------------------------|
|  | road junction          |
|  | track/stream crossing  |
|  | between hill and knoll |
|  | between boulders       |

Compass directions are mentioned in some of the above descriptions. Similar symbols exist for directions not shown.

\*non-IOF symbol.

# IOF Orienteering Map Symbols

**Land forms**

|  |                           |
|--|---------------------------|
|  | Contour                   |
|  | Index contour             |
|  | Form line                 |
|  | Slope line                |
|  | Contour value             |
|  | Earth bank                |
|  | Earth wall                |
|  | Small earth wall          |
|  | Erosion gully             |
|  | Small erosion gully       |
|  | Knoll                     |
|  | Small knoll               |
|  | Elongated knoll           |
|  | Depression                |
|  | Small depression          |
|  | Pit                       |
|  | Broken ground             |
|  | Special land form feature |

**Water and marsh**

|  |                             |
|--|-----------------------------|
|  | Lake                        |
|  | Pond                        |
|  | Waterhole                   |
|  | Uncrossable river           |
|  | Crossable watercourse       |
|  | Crossable small watercourse |
|  | Minor water channel         |
|  | Narrow marsh                |
|  | Uncrossable marsh           |
|  | Marsh                       |
|  | Indistinct marsh            |
|  | Well                        |
|  | Spring                      |
|  | Special water feature       |

**Rock and boulders**

|  |                     |
|--|---------------------|
|  | Impassable cliff    |
|  | Rock pillars/cliffs |
|  | Passable rock face  |
|  | Rocky pit           |
|  | Cave                |
|  | Boulder             |
|  | Large boulder       |
|  | Boulder field       |
|  | Boulder cluster     |
|  | Stony ground        |
|  | Open sandy ground   |
|  | Bare rock           |

**Man-made features**

|  |                               |
|--|-------------------------------|
|  | Motorway                      |
|  | Major road                    |
|  | Minor road                    |
|  | Road                          |
|  | Vehicle track                 |
|  | Footpath                      |
|  | Small path                    |
|  | Less distinct small path      |
|  | Narrow ride                   |
|  | Visible path junction         |
|  | Indistinct junction           |
|  | Footbridge                    |
|  | Crossing point with bridge    |
|  | Crossing point without bridge |
|  | Railway                       |
|  | Power line                    |
|  | Major power line              |
|  | Tunnel                        |
|  | Stone wall                    |
|  | Ruined stone wall             |
|  | High stone wall               |
|  | Fence                         |
|  | Ruined fence                  |
|  | High fence                    |
|  | Crossing point Building       |
|  | Settlement                    |
|  | Permanently out of bounds     |
|  | Paved area                    |
|  | Ruin                          |
|  | Firing range                  |
|  | Grave                         |
|  | Crossable pipeline            |
|  | Uncrossable pipeline          |
|  | High tower                    |
|  | Small tower                   |
|  | Cairn                         |
|  | Fodder rack                   |
|  | Special man-made feature      |

**Technical symbols**

|  |                     |
|--|---------------------|
|  | Magnetic north line |
|  | Registration marks  |
|  | Spot height         |

**Vegetation**

|  |   |
|--|---|
|  | Open land                                     |
|  | Open land with scattered trees                |
|  | Rough open land                               |
|  | Rough open land with scattered trees          |
|  | Forest: easy running                          |
|  | Forest: slow running                          |
|  | Undergrowth: slow running                     |
|  | Forest: difficult to run                      |
|  | Undergrowth: difficult to run                 |
|  | Vegetation: very difficult to run, impassable |
|  | Forest runnable in one direction              |
|  | Orchard                                       |
|  | Vineyard                                      |
|  | Distinct cultivation boundary                 |
|  | Cultivated land                               |
|  | Distinct vegetation boundary                  |
|  | Indistinct vegetation boundary                |
|  | Special vegetation feature                    |

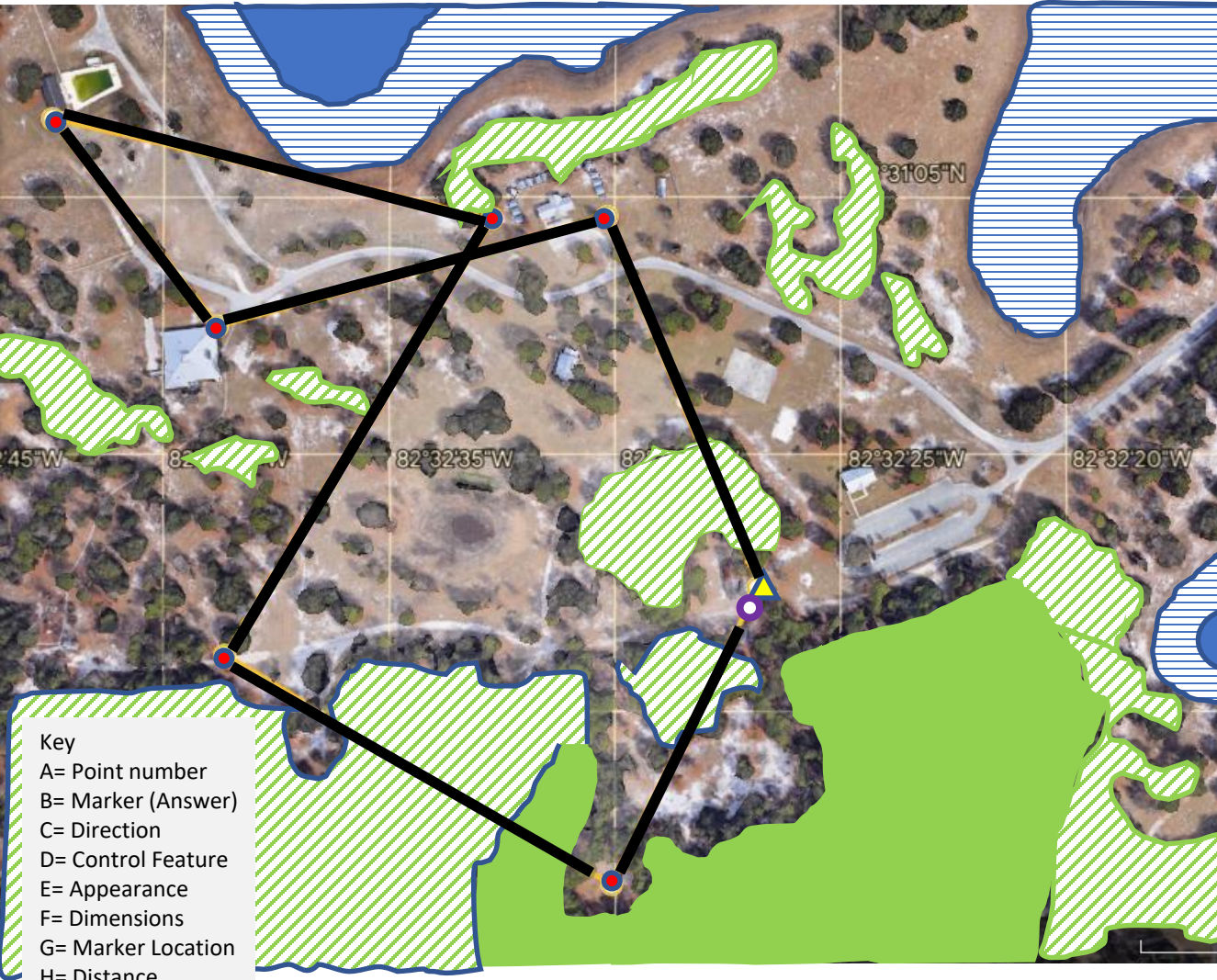
**Overprinting symbols**

|  |                      |
|--|----------------------|
|  | Start                |
|  | Control point        |
|  | Control number       |
|  | Line                 |
|  | Marked route         |
|  | Finish               |
|  | Uncrossable boundary |
|  | Crossing point       |
|  | Out-of-bounds area   |
|  | Dangerous area       |
|  | Forbidden route      |
|  | First aid point      |
|  | Refreshment point    |

© Simon Errington 2007.  
Copies of these map symbols and of the IOF pictorial control descriptions can be downloaded from [www.maprunner.co.uk](http://www.maprunner.co.uk)  
The full ISOM 2000 specification is available from [www.orienteering.org](http://www.orienteering.org)



# CARD 9

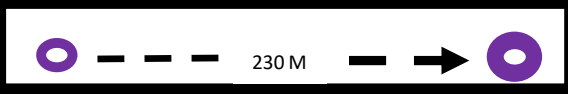


Key  
 A= Point number  
 B= Marker (Answer)  
 C= Direction  
 D= Control Feature  
 E= Appearance  
 F= Dimensions  
 G= Marker Location  
 H= Distance

A B C D E F G H

Location: SANDHILL

| Course Name<br>CARD 9 |   |     | Total Distance<br>1691 M |   |    | Max Elev<br>13 M |     |
|-----------------------|---|-----|--------------------------|---|----|------------------|-----|
| 1                     |   | 208 | ◇                        | ▤ |    | ○                | 180 |
| 2                     |   | 303 | /                        | Y |    | ○                | 270 |
| 3                     |   | 34  | △                        | ☼ | 3M |                  | 300 |
| 4                     |   | 288 | ∩                        | ∪ |    | ○                | 265 |
| 5                     |   | 142 | ■                        | ▤ |    | ∧                | 150 |
| 6                     |   | 78  | △                        | ☼ | 3M |                  | 235 |
| 7                     | S | 163 | ■                        | ▤ |    | <                | 230 |



100 m Camera: 923 m 28°30'59"N 82°32'24"W 13 m

**Column C**  
(which one of several)

|  |                    |
|--|--------------------|
|  | upper              |
|  | lower              |
|  | middle             |
|  | most north-eastern |
|  | rock pillar        |
|  | group of boulders  |
|  | boulder field      |
|  | stony ground       |
|  | cave               |
|  | narrow passage     |

**Column D**  
(the control feature)

|  |                          |
|--|--------------------------|
|  | carthbank                |
|  | quarry                   |
|  | earth wall               |
|  | terrace                  |
|  | spur                     |
|  | re-entrant               |
|  | gully                    |
|  | hill                     |
|  | knoll                    |
|  | saddle                   |
|  | depression               |
|  | small depression         |
|  | pit                      |
|  | anthill                  |
|  | platform*                |
|  | crag/cliff               |
|  | boulder                  |
|  | lake                     |
|  | pond                     |
|  | waterhole/wet pit        |
|  | stream                   |
|  | ditch*                   |
|  | dry ditch/small gully    |
|  | marsh                    |
|  | firm ground in marsh     |
|  | narrow marsh             |
|  | minor water channel      |
|  | well                     |
|  | spring/source            |
|  | water tank, water trough |
|  | open land                |
|  | semi-open land           |
|  | forest corner            |
|  | clearing                 |

Columns D-F or D-G may also contain, for example:

|  |                       |
|--|-----------------------|
|  | road junction         |
|  | track/stream crossing |

|  |                        |
|--|------------------------|
|  | between hill and knoll |
|  | between boulders       |

Compass directions are mentioned in some of the above descriptions. Similar symbols exist for directions not shown.

\*non-IOF symbol.

|  |                     |
|--|---------------------|
|  | vegetation boundary |
|  | thicket             |
|  | linear thicket      |
|  | distinctive tree    |
|  | distinctive tree*   |
|  | copse               |
|  | copse*              |
|  | root stock          |
|  | road                |
|  | track/path          |
|  | ride                |
|  | wall                |
|  | fence               |
|  | telegraph pole      |
|  | power line          |
|  | footbridge          |
|  | building            |
|  | ruin                |
|  | tower               |
|  | crossing point      |
|  | shooting platform   |
|  | fodder rack         |
|  | tunnel              |
|  | paved area          |

**Column E**  
(appearance)

|  |            |
|--|------------|
|  | low        |
|  | shallow    |
|  | deep       |
|  | ruined     |
|  | overgrown  |
|  | open       |
|  | stony      |
|  | marshy     |
|  | sandy      |
|  | coniferous |
|  | deciduous  |

**Column F**  
(dimensions)

|  |  |
|--|--|
|  | 2.5 feature height                                   |
|  | 8 x 4 horizontal dimensions                          |
|  | 0.5 height of feature on slope                       |
|  | 2.0 heights of two features with control between the |
|  | 3.0 heights of two features with control between the |

**Column G**  
(marker location)

|  |                    |
|--|--------------------|
|  | NE side            |
|  | E edge             |
|  | W corner (inside)  |
|  | W corner (outside) |
|  | bend               |
|  | NW tip             |
|  | N part             |
|  | S end              |
|  | upper part         |
|  | lower part         |
|  | between            |
|  | top                |
|  | beneath            |
|  | foot (no dir.)     |
|  | NE foot            |

**Column H**  
(other information)

|  |                |
|--|----------------|
|  | drinks         |
|  | radio control  |
|  | manned control |
|  | first aid      |

# IOF Orienteering Map Symbols

**Land forms**

|  |                           |
|--|---------------------------|
|  | Contour                   |
|  | Index contour             |
|  | Form line                 |
|  | Slope line                |
|  | Contour value             |
|  | Earth bank                |
|  | Earth wall                |
|  | Small earth wall          |
|  | Erosion gully             |
|  | Small erosion gully       |
|  | Knoll                     |
|  | Small knoll               |
|  | Elongated knoll           |
|  | Depression                |
|  | Small depression          |
|  | Pit                       |
|  | Broken ground             |
|  | Special land form feature |

**Water and marsh**

|  |                             |
|--|-----------------------------|
|  | Lake                        |
|  | Pond                        |
|  | Waterhole                   |
|  | Uncrossable river           |
|  | Crossable watercourse       |
|  | Crossable small watercourse |
|  | Minor water channel         |
|  | Narrow marsh                |
|  | Uncrossable marsh           |
|  | Marsh                       |
|  | Indistinct marsh            |
|  | Well                        |
|  | Spring                      |
|  | Special water feature       |

**Rock and boulders**

|  |                     |
|--|---------------------|
|  | Impassable cliff    |
|  | Rock pillars/cliffs |
|  | Passable rock face  |
|  | Rocky pit           |
|  | Cave                |
|  | Boulder             |
|  | Large boulder       |
|  | Boulder field       |
|  | Boulder cluster     |
|  | Stony ground        |
|  | Open sandy ground   |
|  | Bare rock           |

**Man-made features**

|  |                               |
|--|-------------------------------|
|  | Motorway                      |
|  | Major road                    |
|  | Minor road                    |
|  | Road                          |
|  | Vehicle track                 |
|  | Footpath                      |
|  | Small path                    |
|  | Less distinct small path      |
|  | Narrow ride                   |
|  | Visible path junction         |
|  | Indistinct junction           |
|  | Footbridge                    |
|  | Crossing point with bridge    |
|  | Crossing point without bridge |
|  | Railway                       |
|  | Power line                    |
|  | Major power line              |
|  | Tunnel                        |
|  | Stone wall                    |
|  | Ruined stone wall             |
|  | High stone wall               |
|  | Fence                         |
|  | Ruined fence                  |
|  | High fence                    |
|  | Crossing point Building       |
|  | Settlement                    |
|  | Permanently out of bounds     |
|  | Paved area                    |
|  | Ruin                          |
|  | Firing range                  |
|  | Grave                         |
|  | Crossable pipeline            |
|  | Uncrossable pipeline          |
|  | High tower                    |
|  | Small tower                   |
|  | Cairn                         |
|  | Fodder rack                   |
|  | Special man-made feature      |

**Technical symbols**

|  |                     |
|--|---------------------|
|  | Magnetic north line |
|  | Registration marks  |
|  | Spot height         |

**Vegetation**

|  |   |
|--|---|
|  | Open land                                     |
|  | Open land with scattered trees                |
|  | Rough open land                               |
|  | Rough open land with scattered trees          |
|  | Forest: easy running                          |
|  | Forest: slow running                          |
|  | Undergrowth: slow running                     |
|  | Forest: difficult to run                      |
|  | Undergrowth: difficult to run                 |
|  | Vegetation: very difficult to run, impassable |
|  | Forest runnable in one direction              |
|  | Orchard                                       |
|  | Vineyard                                      |
|  | Distinct cultivation boundary                 |
|  | Cultivated land                               |
|  | Distinct vegetation boundary                  |
|  | Indistinct vegetation boundary                |
|  | Special vegetation feature                    |

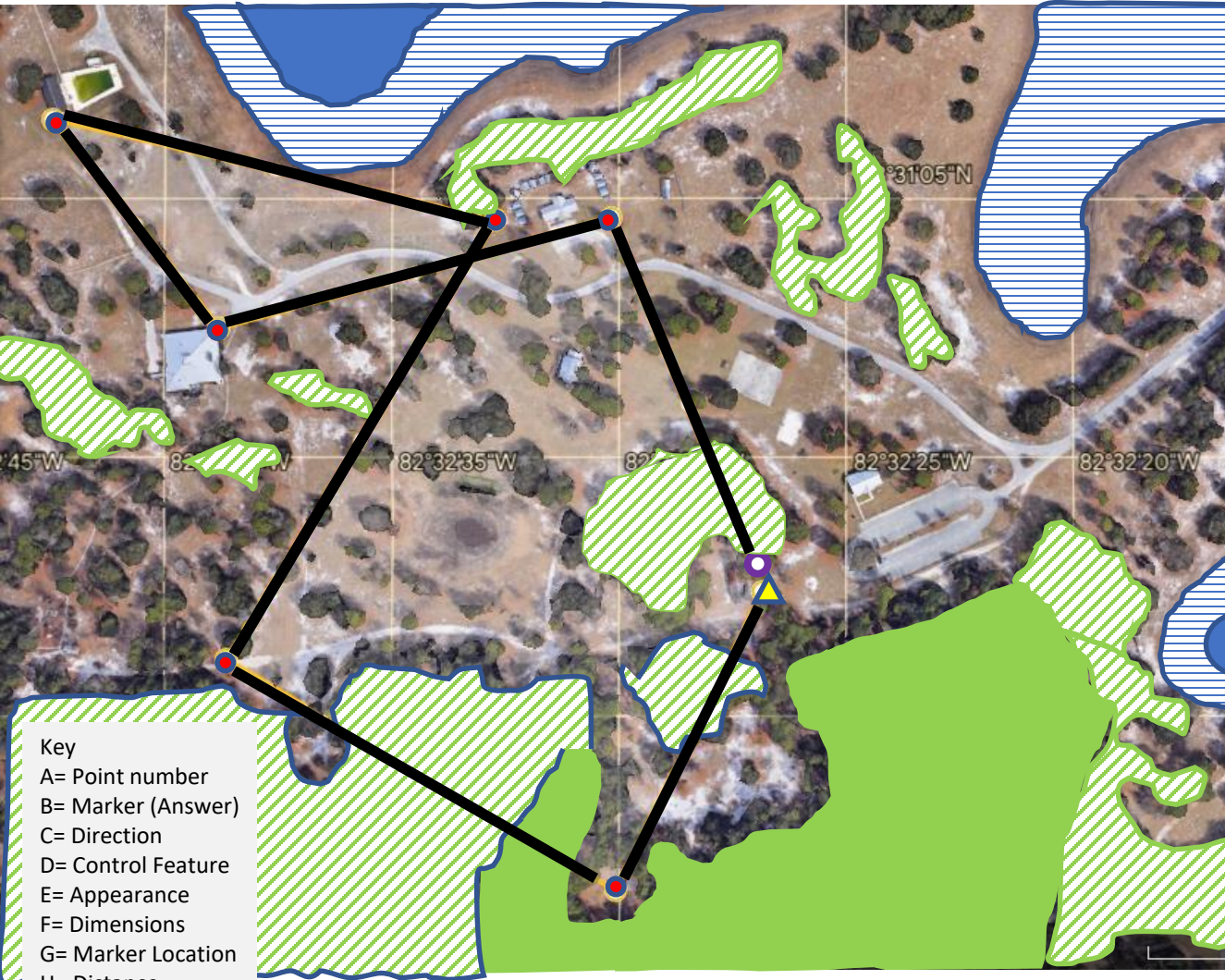
**Overprinting symbols**

|  |                      |
|--|----------------------|
|  | Start                |
|  | Control point        |
|  | Control number       |
|  | Line                 |
|  | Marked route         |
|  | Finish               |
|  | Uncrossable boundary |
|  | Crossing point       |
|  | Out-of-bounds area   |
|  | Dangerous area       |
|  | Forbidden route      |
|  | First aid point      |
|  | Refreshment point    |

© Simon Errington 2007.  
Copies of these map symbols and of the IOF pictorial control descriptions can be downloaded from [www.maprunner.co.uk](http://www.maprunner.co.uk)  
The full ISOM 2000 specification is available from [www.orienteeing.org](http://www.orienteeing.org)



# CARD 10



Key  
 A= Point number  
 B= Marker (Answer)  
 C= Direction  
 D= Control Feature  
 E= Appearance  
 F= Dimensions  
 G= Marker Location  
 H= Distance

A B C D E F G H

Location: SANDHILL

| Course Name<br>CARD 10 |   |     | Total Distance<br>1691 M |  |    | Max Elev<br>13 M |     |
|------------------------|---|-----|--------------------------|--|----|------------------|-----|
| 1                      |   | 343 |                          |  | 3M |                  | 230 |
| 2                      |   | 258 |                          |  |    |                  | 235 |
| 3                      |   | 328 |                          |  |    |                  | 150 |
| 4                      |   | 108 |                          |  | 3M |                  | 265 |
| 5                      |   | 214 |                          |  |    |                  | 300 |
| 6                      |   | 124 |                          |  |    |                  | 270 |
| 7                      | S | 28  |                          |  |    |                  | 180 |



100 m Camera: 923 m 28°30'59"N 82°32'24"W 13 m

**Column C**  
(which one of several)

|  |                    |
|--|--------------------|
|  | upper              |
|  | lower              |
|  | middle             |
|  | most north-eastern |

**Column D**  
(the control feature)

|  |                  |
|--|------------------|
|  | carthbank        |
|  | quarry           |
|  | earth wall       |
|  | terrace          |
|  | spur             |
|  | re-entrant       |
|  | gully            |
|  | hill             |
|  | knoll            |
|  | saddle           |
|  | depression       |
|  | small depression |
|  | pit              |
|  | anthill          |
|  | platform*        |
|  | crag/cliff       |
|  | boulder          |

|  |                          |
|--|--------------------------|
|  | rock pillar              |
|  | group of boulders        |
|  | boulder field            |
|  | stony ground             |
|  | cave                     |
|  | narrow passage           |
|  | bare rock                |
|  | lake                     |
|  | pond                     |
|  | waterhole/wet pit        |
|  | stream                   |
|  | ditch*                   |
|  | dry ditch/small gully    |
|  | marsh                    |
|  | firm ground in marsh     |
|  | narrow marsh             |
|  | minor water channel      |
|  | well                     |
|  | spring/source            |
|  | water tank, water trough |
|  | open land                |
|  | semi-open land           |
|  | forest corner            |
|  | clearing                 |

|  |                     |
|--|---------------------|
|  | vegetation boundary |
|  | thicket             |
|  | linear thicket      |
|  | distinctive tree    |
|  | distinctive tree*   |
|  | copse               |
|  | copse*              |
|  | root stock          |
|  | road                |
|  | track/path          |
|  | ride                |
|  | wall                |
|  | fence               |
|  | telegraph pole      |
|  | power line          |
|  | footbridge          |
|  | building            |
|  | ruin                |
|  | tower               |
|  | crossing point      |
|  | shooting platform   |
|  | fodder rack         |
|  | tunnel              |
|  | paved area          |

|  |                                      |
|--|--------------------------------------|
|  | pipeline                             |
|  | charcoal burning ground              |
|  | sculpture                            |
|  | building pass through                |
|  | stairway                             |
|  | boundary stone/cairn                 |
|  | broken ground                        |
|  | special item (meaning will be given) |
|  | special item*                        |

**Column E**  
(appearance)

|  |            |
|--|------------|
|  | low        |
|  | shallow    |
|  | deep       |
|  | ruined     |
|  | overgrown  |
|  | open       |
|  | stony      |
|  | marshy     |
|  | sandy      |
|  | coniferous |
|  | deciduous  |

**Column F**  
(dimensions)

|       |  |
|-------|--|
| 2.5   | feature height                                   |
| 8 x 4 | horizontal dimensions                            |
| 0.5   | height of feature on slope                       |
| 3.0   |  |
| 2.0   | heights of two features with control between the |
| 3.0   |  |

**Column G**  
(marker location)

|  |                    |
|--|--------------------|
|  | NE side            |
|  | E edge             |
|  | W corner (inside)  |
|  | W corner (outside) |
|  | bend               |
|  | NW tip             |
|  | N part             |
|  | S end              |
|  | upper part         |
|  | lower part         |
|  | between            |
|  | top                |
|  | beneath            |
|  | foot (no dir.)     |
|  | NE foot            |

**Column H**  
(other information)

|  |                |
|--|----------------|
|  | drinks         |
|  | radio control  |
|  | manned control |
|  | first aid      |

Columns D-F or D-G may also contain, for example:

|  |                        |
|--|------------------------|
|  | road junction          |
|  | track/stream crossing  |
|  | between hill and knoll |
|  | between boulders       |

Compass directions are mentioned in some of the above descriptions. Similar symbols exist for directions not shown.

\*non-IOF symbol.

# IOF Orienteering Map Symbols

### Land forms

- Contour
- Index contour
- Form line
- Slope line
- Contour value
- Earth bank
- Earth wall
- Small earth wall
- Erosion gully
- Small erosion gully
- Knoll
- Small knoll
- Elongated knoll
- Depression
- Small depression
- Pit
- Broken ground
- Special land form feature

### Water and marsh

- Lake
- Pond
- Waterhole
- Uncrossable river
- Crossable watercourse
- Crossable small watercourse
- Minor water channel
- Narrow marsh
- Uncrossable marsh
- Marsh
- Indistinct marsh
- Well
- Spring
- Special water feature

### Rock and boulders

- Impassable cliff
- Rock pillars/cliffs
- Passable rock face
- Rocky pit
- Cave
- Boulder
- Large boulder
- Boulder field
- Boulder cluster
- Stony ground
- Open sandy ground
- Bare rock

### Man-made features

- Motorway
- Major road
- Minor road
- Road
- Vehicle track
- Footpath
- Small path
- Less distinct small path
- Narrow ride
- Visible path junction
- Indistinct junction
- Footbridge
- Crossing point with bridge
- Crossing point without bridge
- Railway
- Power line
- Major power line
- Tunnel
- Stone wall
- Ruined stone wall
- High stone wall
- Fence
- Ruined fence
- High fence
- Crossing point
- Building
- Settlement
- Permanently out of bounds
- Paved area
- Ruin
- Firing range
- Grave
- Crossable pipeline
- Uncrossable pipeline
- High tower
- Small tower
- Cairn
- Fodder rack
- Special man-made feature

### Vegetation

- Open land
- Open land with scattered trees
- Rough open land
- Rough open land with scattered trees
- Forest: easy running
- Forest: slow running
- Undergrowth: slow running
- Forest: difficult to run
- Undergrowth: difficult to run
- Vegetation: very difficult to run, impassable
- Forest runnable in one direction
- Orchard
- Vineyard
- Distinct cultivation boundary
- Cultivated land
- Distinct vegetation boundary
- Indistinct vegetation boundary
- Special vegetation feature

### Overprinting symbols

- Start
- Control point
- Control number
- Line
- Marked route
- Finish
- Uncrossable boundary
- Crossing point
- Out-of-bounds area
- Dangerous area
- Forbidden route
- First aid point
- Refreshment point

### Technical symbols

- Magnetic north line
- Registration marks
- Spot height

© Simon Errington 2007.  
Copies of these map symbols and of the IOF pictorial control descriptions can be downloaded from [www.maprunner.co.uk](http://www.maprunner.co.uk)  
The full ISOM 2000 specification is available from [www.orienteeing.org](http://www.orienteeing.org)



# CARD 11

| Location: SANDHILL |   |                |  |  |          |  |     |
|--------------------|---|----------------|--|--|----------|--|-----|
| Course Name        |   | Total Distance |  |  | Max Elev |  |     |
| CARD 11            |   | 1656 M         |  |  | 13 M     |  |     |
| 1                  |   | 356            |  |  | 3M       |  | 120 |
| 2                  |   | 287            |  |  |          |  | 90  |
| 3                  |   | 186            |  |  |          |  | 170 |
| 4                  |   | 169            |  |  |          |  | 145 |
| 5                  |   | 32             |  |  |          |  | 270 |
| 6                  |   | 124            |  |  |          |  | 200 |
| 7                  |   | 23             |  |  | 3M       |  | 245 |
| 8                  |   | 241            |  |  |          |  | 175 |
| 9                  | S | 244            |  |  |          |  | 180 |

Key

- A= Point number
- B= Marker (Answer)
- C= Direction
- D= Control Feature
- E= Appearance
- F= Dimensions
- G= Marker Location
- H= Distance

Perimeter

1,656.69 m

---

Area

46,124.49 m<sup>2</sup>

Start new

A B C D E F G H

- - - 180 M - - -

**Column C**  
(which one of several)

|  |                    |
|--|--------------------|
|  | upper              |
|  | lower              |
|  | middle             |
|  | most north-eastern |

**Column D**  
(the control feature)

|  |                  |
|--|------------------|
|  | carthbank        |
|  | quarry           |
|  | earth wall       |
|  | terrace          |
|  | spur             |
|  | re-entrant       |
|  | gully            |
|  | hill             |
|  | knoll            |
|  | saddle           |
|  | depression       |
|  | small depression |
|  | pit              |
|  | anthill          |
|  | platform*        |
|  | crag/cliff       |
|  | boulder          |

|  |                          |
|--|--------------------------|
|  | rock pillar              |
|  | group of boulders        |
|  | boulder field            |
|  | stony ground             |
|  | cave                     |
|  | narrow passage           |
|  | bare rock                |
|  | lake                     |
|  | pond                     |
|  | waterhole/wet pit        |
|  | stream                   |
|  | ditch*                   |
|  | dry ditch/small gully    |
|  | marsh                    |
|  | firm ground in marsh     |
|  | narrow marsh             |
|  | minor water channel      |
|  | well                     |
|  | spring/source            |
|  | water tank, water trough |
|  | open land                |
|  | semi-open land           |
|  | forest corner            |
|  | clearing                 |

|  |                     |
|--|---------------------|
|  | vegetation boundary |
|  | thicket             |
|  | linear thicket      |
|  | distinctive tree    |
|  | distinctive tree*   |
|  | copse               |
|  | copse*              |
|  | root stock          |
|  | road                |
|  | track/path          |
|  | ride                |
|  | wall                |
|  | fence               |
|  | telegraph pole      |
|  | power line          |
|  | footbridge          |
|  | building            |
|  | ruin                |
|  | tower               |
|  | crossing point      |
|  | shooting platform   |
|  | fodder rack         |
|  | tunnel              |
|  | paved area          |

|  |                                      |
|--|--------------------------------------|
|  | pipeline                             |
|  | charcoal burning ground              |
|  | sculpture                            |
|  | building pass through                |
|  | stairway                             |
|  | boundary stone/cairn                 |
|  | broken ground                        |
|  | special item (meaning will be given) |
|  | special item*                        |

**Column E**  
(appearance)

|  |            |
|--|------------|
|  | low        |
|  | shallow    |
|  | deep       |
|  | ruined     |
|  | overgrown  |
|  | open       |
|  | stony      |
|  | marshy     |
|  | sandy      |
|  | coniferous |
|  | deciduous  |

**Column F**  
(dimensions)

|       |  |
|-------|--|
| 2.5   | feature height                                   |
| 8 x 4 | horizontal dimensions                            |
| 0.5   | height of feature on slope                       |
| 3.0   |  |
| 2.0   | heights of two features with control between the |
| 3.0   |  |

**Column G**  
(marker location)

|  |                    |
|--|--------------------|
|  | NE side            |
|  | E edge             |
|  | W corner (inside)  |
|  | W corner (outside) |
|  | bend               |
|  | NW tip             |
|  | N part             |
|  | S end              |
|  | upper part         |
|  | lower part         |
|  | between            |
|  | top                |
|  | beneath            |
|  | foot (no dir.)     |
|  | NE foot            |

**Column H**  
(other information)

|  |                |
|--|----------------|
|  | drinks         |
|  | radio control  |
|  | manned control |
|  | first aid      |

Columns D-F or D-G may also contain, for example:

|  |                        |
|--|------------------------|
|  | road junction          |
|  | track/stream crossing  |
|  | between hill and knoll |
|  | between boulders       |

Compass directions are mentioned in some of the above descriptions. Similar symbols exist for directions not shown.

\*non-IOF symbol.

# IOF Orienteering Map Symbols

### Land forms

- Contour
- Index contour
- Form line
- Slope line
- Contour value
- Earth bank
- Earth wall
- Small earth wall
- Erosion gully
- Small erosion gully
- Knoll
- Small knoll
- Elongated knoll
- Depression
- Small depression
- Pit
- Broken ground
- Special land form feature

### Water and marsh

- Lake
- Pond
- Waterhole
- Uncrossable river
- Crossable watercourse
- Crossable small watercourse
- Minor water channel
- Narrow marsh
- Uncrossable marsh
- Marsh
- Indistinct marsh
- Well
- Spring
- Special water feature

### Rock and boulders

- Impassable cliff
- Rock pillars/cliffs
- Passable rock face
- Rocky pit
- Cave
- Boulder
- Large boulder
- Boulder field
- Boulder cluster
- Stony ground
- Open sandy ground
- Bare rock

### Man-made features

- Motorway
- Major road
- Minor road
- Road
- Vehicle track
- Footpath
- Small path
- Less distinct small path
- Narrow ride
- Visible path junction
- Indistinct junction
- Footbridge
- Crossing point with bridge
- Crossing point without bridge
- Railway
- Power line
- Major power line
- Tunnel
- Stone wall
- Ruined stone wall
- High stone wall
- Fence
- Ruined fence
- High fence
- Crossing point
- Building
- Settlement
- Permanently out of bounds
- Paved area
- Ruin
- Firing range
- Grave
- Crossable pipeline
- Uncrossable pipeline
- High tower
- Small tower
- Cairn
- Fodder rack
- Special man-made feature

### Vegetation

- Open land
- Open land with scattered trees
- Rough open land
- Rough open land with scattered trees
- Forest: easy running
- Forest: slow running
- Undergrowth: slow running
- Forest: difficult to run
- Undergrowth: difficult to run
- Vegetation: very difficult to run, impassable
- Forest runnable in one direction
- Orchard
- Vineyard
- Distinct cultivation boundary
- Cultivated land
- Distinct vegetation boundary
- Indistinct vegetation boundary
- Special vegetation feature

### Overprinting symbols

- Start
- Control point
- Control number
- Line
- Marked route
- Finish
- Uncrossable boundary
- Crossing point
- Out-of-bounds area
- Dangerous area
- Forbidden route
- First aid point
- Refreshment point

### Technical symbols

- Magnetic north line
- Registration marks
- Spot height

© Simon Errington 2007.  
Copies of these map symbols and of the IOF pictorial control descriptions can be downloaded from [www.maprunner.co.uk](http://www.maprunner.co.uk)  
The full ISOM 2000 specification is available from [www.orienteeing.org](http://www.orienteeing.org)



# CARD 12

| Location: SANDHILL |       |                |   |    |   |          |  |
|--------------------|-------|----------------|---|----|---|----------|--|
| Course Name        |       | Total Distance |   |    |   | Max Elev |  |
| CARD 12            |       | 1656 M         |   |    |   | 13 M     |  |
| 1                  | 64    | /              | ↘ |    | ○ | 180      |  |
| 2                  | 61    | /              | ☼ | 3M |   | 175      |  |
| 3                  | 203   | ■              | ▨ |    | └ | 245      |  |
| 4                  | 304   | ■              | ▨ |    | └ | 200      |  |
| 5                  | 212   | ◇              | ▨ |    | ○ | 270      |  |
| 6                  | 348   | /              | ↘ |    | ○ | 145      |  |
| 7                  | 6     | ■              | ▨ |    | ∧ | 170      |  |
| 8                  | 107   | ▴              | ☼ | 3M |   | 90       |  |
| 9                  | S 176 | ■              | ▨ |    | < | 120      |  |

Key

- A= Point number
- B= Marker (Answer)
- C= Direction
- D= Control Feature
- E= Appearance
- F= Dimensions
- G= Marker Location
- H= Distance

Perimeter ?  
1,656.69 m

Area  
46,124.49 m<sup>2</sup>

Start new

120 M

**Column C**  
(which one of several)

|  |                    |
|--|--------------------|
|  | upper              |
|  | lower              |
|  | middle             |
|  | most north-eastern |

**Column D**  
(the control feature)

|  |                  |
|--|------------------|
|  | carthbank        |
|  | quarry           |
|  | earth wall       |
|  | terrace          |
|  | spur             |
|  | re-entrant       |
|  | gully            |
|  | hill             |
|  | knoll            |
|  | saddle           |
|  | depression       |
|  | small depression |
|  | pit              |
|  | anthill          |
|  | platform*        |
|  | crag/cliff       |
|  | boulder          |

|  |                          |
|--|--------------------------|
|  | rock pillar              |
|  | group of boulders        |
|  | boulder field            |
|  | stony ground             |
|  | cave                     |
|  | narrow passage           |
|  | bare rock                |
|  | lake                     |
|  | pond                     |
|  | waterhole/wet pit        |
|  | stream                   |
|  | ditch*                   |
|  | dry ditch/small gully    |
|  | marsh                    |
|  | firm ground in marsh     |
|  | narrow marsh             |
|  | minor water channel      |
|  | well                     |
|  | spring/source            |
|  | water tank, water trough |
|  | open land                |
|  | semi-open land           |
|  | forest corner            |
|  | clearing                 |

|  |                     |
|--|---------------------|
|  | vegetation boundary |
|  | thicket             |
|  | linear thicket      |
|  | distinctive tree    |
|  | distinctive tree*   |
|  | copse               |
|  | copse*              |
|  | root stock          |
|  | road                |
|  | track/path          |
|  | ride                |
|  | wall                |
|  | fence               |
|  | telegraph pole      |
|  | power line          |
|  | footbridge          |
|  | building            |
|  | ruin                |
|  | tower               |
|  | crossing point      |
|  | shooting platform   |
|  | fodder rack         |
|  | tunnel              |
|  | paved area          |

|  |                                      |
|--|--------------------------------------|
|  | pipeline                             |
|  | charcoal burning ground              |
|  | sculpture                            |
|  | building pass through                |
|  | stairway                             |
|  | boundary stone/cairn                 |
|  | broken ground                        |
|  | special item (meaning will be given) |
|  | special item*                        |

**Column E**  
(appearance)

|  |            |
|--|------------|
|  | low        |
|  | shallow    |
|  | deep       |
|  | ruined     |
|  | overgrown  |
|  | open       |
|  | stony      |
|  | marshy     |
|  | sandy      |
|  | coniferous |
|  | deciduous  |

**Column F**  
(dimensions)

|       |  |
|-------|--|
| 2.5   | feature height                                   |
| 8 x 4 | horizontal dimensions                            |
| 0.5   | height of feature on slope                       |
| 3.0   |  |
| 2.0   | heights of two features with control between the |
| 3.0   |  |

**Column G**  
(marker location)

|  |                    |
|--|--------------------|
|  | NE side            |
|  | E edge             |
|  | W corner (inside)  |
|  | W corner (outside) |
|  | bend               |
|  | NW tip             |
|  | N part             |
|  | S end              |
|  | upper part         |
|  | lower part         |
|  | between            |
|  | top                |
|  | beneath            |
|  | foot (no dir.)     |
|  | NE foot            |

**Column H**  
(other information)

|  |                |
|--|----------------|
|  | drinks         |
|  | radio control  |
|  | manned control |
|  | first aid      |

Columns D-F or D-G may also contain, for example:

|  |                        |
|--|------------------------|
|  | road junction          |
|  | track/stream crossing  |
|  | between hill and knoll |
|  | between boulders       |

Compass directions are mentioned in some of the above descriptions. Similar symbols exist for directions not shown.

\*non-IOF symbol.

# IOF Orienteering Map Symbols

### Land forms

- Contour
- Index contour
- Form line
- Slope line
- Contour value
- Earth bank
- Earth wall
- Small earth wall
- Erosion gully
- Small erosion gully
- Knoll
- Small knoll
- Elongated knoll
- Depression
- Small depression
- Pit
- Broken ground
- Special land form feature

### Water and marsh

- Lake
- Pond
- Waterhole
- Uncrossable river
- Crossable watercourse
- Crossable small watercourse
- Minor water channel
- Narrow marsh
- Uncrossable marsh
- Marsh
- Indistinct marsh
- Well
- Spring
- Special water feature

### Rock and boulders

- Impassable cliff
- Rock pillars/cliffs
- Passable rock face
- Rocky pit
- Cave
- Boulder
- Large boulder
- Boulder field
- Boulder cluster
- Stony ground
- Open sandy ground
- Bare rock

### Man-made features

- Motorway
- Major road
- Minor road
- Road
- Vehicle track
- Footpath
- Small path
- Less distinct small path
- Narrow ride
- Visible path junction
- Indistinct junction
- Footbridge
- Crossing point with bridge
- Crossing point without bridge
- Railway
- Power line
- Major power line
- Tunnel
- Stone wall
- Ruined stone wall
- High stone wall
- Fence
- Ruined fence
- High fence
- Crossing point
- Building
- Settlement
- Permanently out of bounds
- Paved area
- Ruin
- Firing range
- Grave
- Crossable pipeline
- Uncrossable pipeline
- High tower
- Small tower
- Cairn
- Fodder rack
- Special man-made feature

### Vegetation

- Open land
- Open land with scattered trees
- Rough open land
- Rough open land with scattered trees
- Forest: easy running
- Forest: slow running
- Undergrowth: slow running
- Forest: difficult to run
- Undergrowth: difficult to run
- Vegetation: very difficult to run, impassable
- Forest runnable in one direction
- Orchard
- Vineyard
- Distinct cultivation boundary
- Cultivated land
- Distinct vegetation boundary
- Indistinct vegetation boundary
- Special vegetation feature

### Overprinting symbols

- Start
- Control point
- Control number
- Line
- Marked route
- Finish
- Uncrossable boundary
- Crossing point
- Out-of-bounds area
- Dangerous area
- Forbidden route
- First aid point
- Refreshment point

### Technical symbols

- Magnetic north line
- Registration marks
- Spot height

© Simon Errington 2007.  
Copies of these map symbols and of the IOF pictorial control descriptions can be downloaded from [www.maprunner.co.uk](http://www.maprunner.co.uk)  
The full ISOM 2000 specification is available from [www.orienteeing.org](http://www.orienteeing.org)