

GREATER TAMPA BAY AREA COUNCIL'S



BIG FOOT WILDERNESS CAMP

Combination for all Combination Locks

What: Troop Cabin and Wilderness Campsite and Hiking Trails
Available to all Troops, Explorer Posts and Venture Crews.

Location: East of Dade City in a thirty –seven thousand acre wilderness nature preserve owned by the State of Florida and managed by the Southwest Florida Water Management District.

Facilities: A sixteen hundred square foot cabin, equipped with lights, indoor plumbing, indoor shower with hot water, two wood stoves for heating, non-potable water, outdoor shower for Scout use, outdoor latrine for Scout use, a troop campfire area, patrol campsites; access to 50 miles of the Florida Natural Scenic Trail and 10 miles of connector trails; 37,350 acres of pristine wilderness.

Directions: See attached maps

1. Cabin information

- (a) The combination locks are on the entrance gate to Green Swamp West, the south screen door of the cabin and south inside door to cabin. The combination for each of the locks is the same. The front office will provide the current combination when the troop registers.
- (b) The window shutters are padlocked. Key for all padlocks is inside south cabin door on wall. You are encouraged to open the shutters and enjoy the fresh air.
- (c) Fuse box is in southwest corner of cabin. Top switch is the main switch. Flip it on when entering and off at end of campout. The main switch controls all lighting, the well and the hot water heater.

2. Suggested activities:

- (a) Troop and patrol "leave no trace" camping
- (b) Troop backpacking base
- (c) Ideal site to work on outdoor related advancements
 - (1) Second Class Five Mile Hike
 - (2) Cooking requirements and cooking merit badge
 - (3) Wilderness Trail Hiking (hiking merit badge, backpacking merit badge)
 - (4) Camping skills (wilderness survival merit badge, nature merit badge)
- (d) Excellent annual Troop Senior Patrol Leaders planning site

3. Use Rules:

- (a) Schedule use through Service Center. Tour Permit required. Confirm combination to locks at Service Center. (the combination for the locks is changed frequently)
- (b) ~~The cabin is located on the Withlacoochee River. The Withlacoochee River is off limits. It is a particularly wild river at the site of the cabin. The river has numerous underwater snags. Alligators and water snakes are frequently sighted. Scouts must be cautioned not to attempt to swim, boat, canoe or otherwise use the river -- PERIOD!!!~~
- (c) Use of the cabin itself should be limited to training. If some of the adult leadership are unable to camp with the Scouts, then the cabin can be used for sleeping. Food preparation in the cabin should be limited to the south porch. Lock all windows and doors when leaving the cabin. (The key to the cabin windows is inside the south door hanging on the wall to the left.) Park all cars, trucks and trailers in designated areas. Only the troop fire ring can be used for an open, on ground fire. All other cooking must be done with Coleman stoves or other backpacker stoves.

- (d) All trash to be taken with troop when leaving.
- (e) Leave no trace
- 4. Trail information is attached.
- 5. Layout of site is attached.
- 6. The camp cannot be used on those weekends when hunting is permitted in the Green Swamp Area.

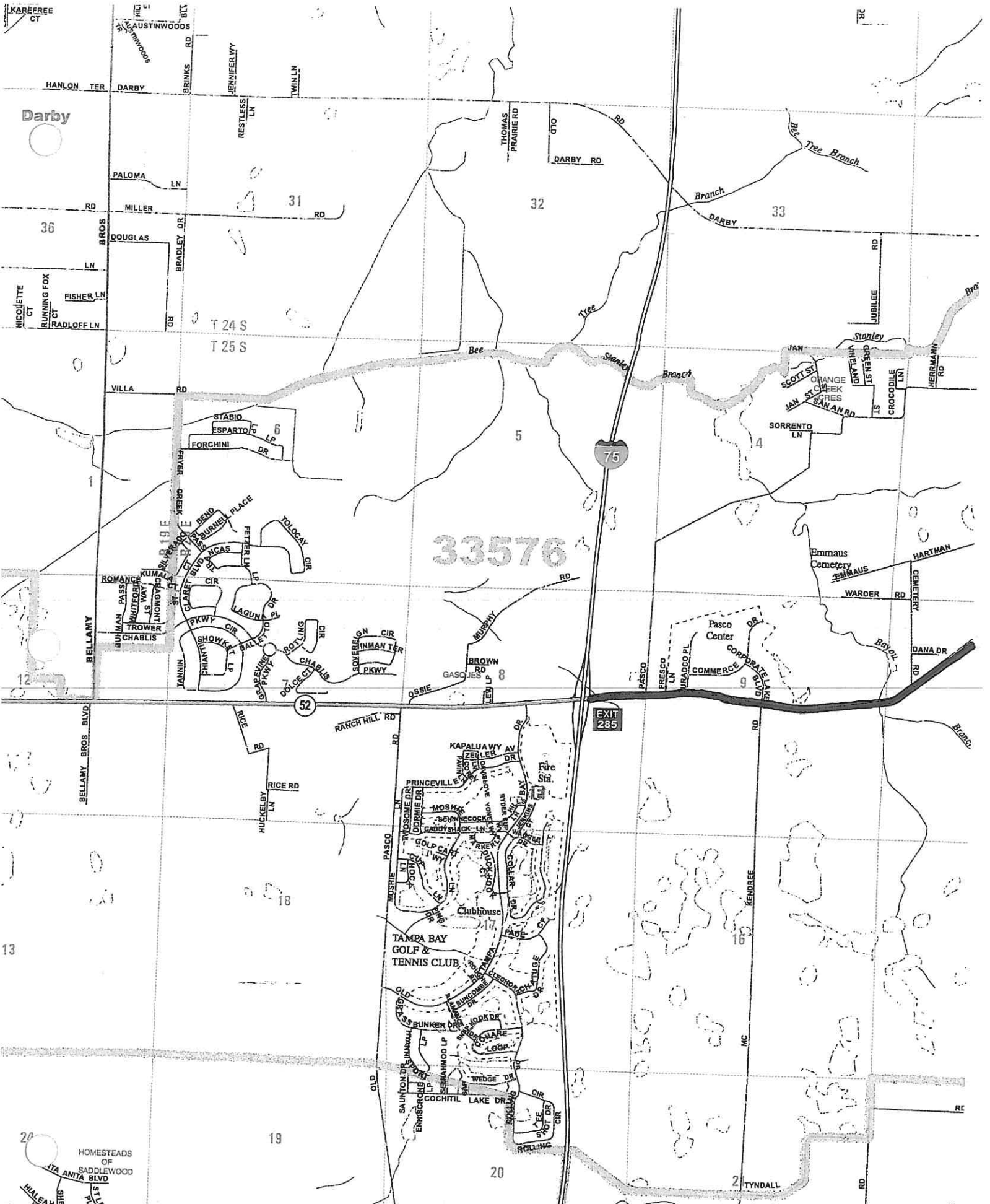
Emergency phone numbers: (IF YOU ARE LOST)

- 1. Mike Carroll 727-323-0996
- 2. Lou Moser 727-510-8886
- 3. Jim Powell 727-744-9115

TRAVEL DIRECTIONS

Big Foot Wilderness Camp

1. I-75 North.
2. Take the SR-52 exit, EXIT 285 on your right, heading East toward Dade City / San Antonio. Drive from interstate past San Antonio, St. Leo's College, and Lake Jovita subdivision.
3. Turn RIGHT onto Prospect Road. Drive for 0.3 miles.
4. Turn LEFT onto Clinton Avenue. Drive for 4.6 miles.
5. Clinton Avenue becomes Enterprise Road. Continue on Enterprise Road for 2 miles.
6. Turn left (North) onto Auton Road (Auton Road is a clay road). Drive for 1.7 miles to where it ends.
7. Turn right (East) onto Ranch Road. Drive across bridge to gate (entrance to Green Swamp West).
8. Continue until the road forks. Take the right fork which is next to church property. Road ends at the gate (must pass through gate to continue) (find lock with "BSA" etched on it)
9. Go through gate and follow map attached.



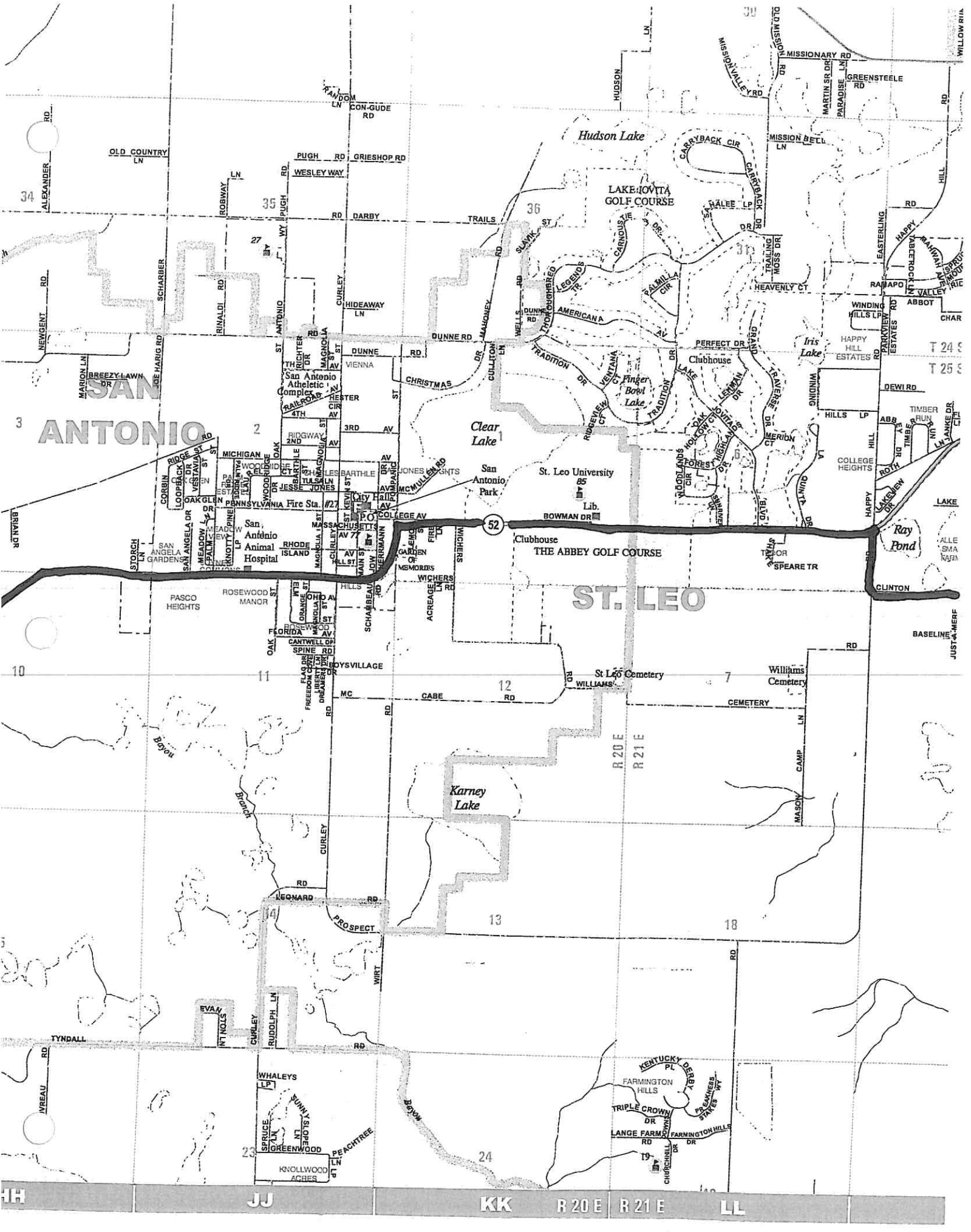
33576

TAMPA BAY
GOLF &
TENNIS CLUB

EXIT
285

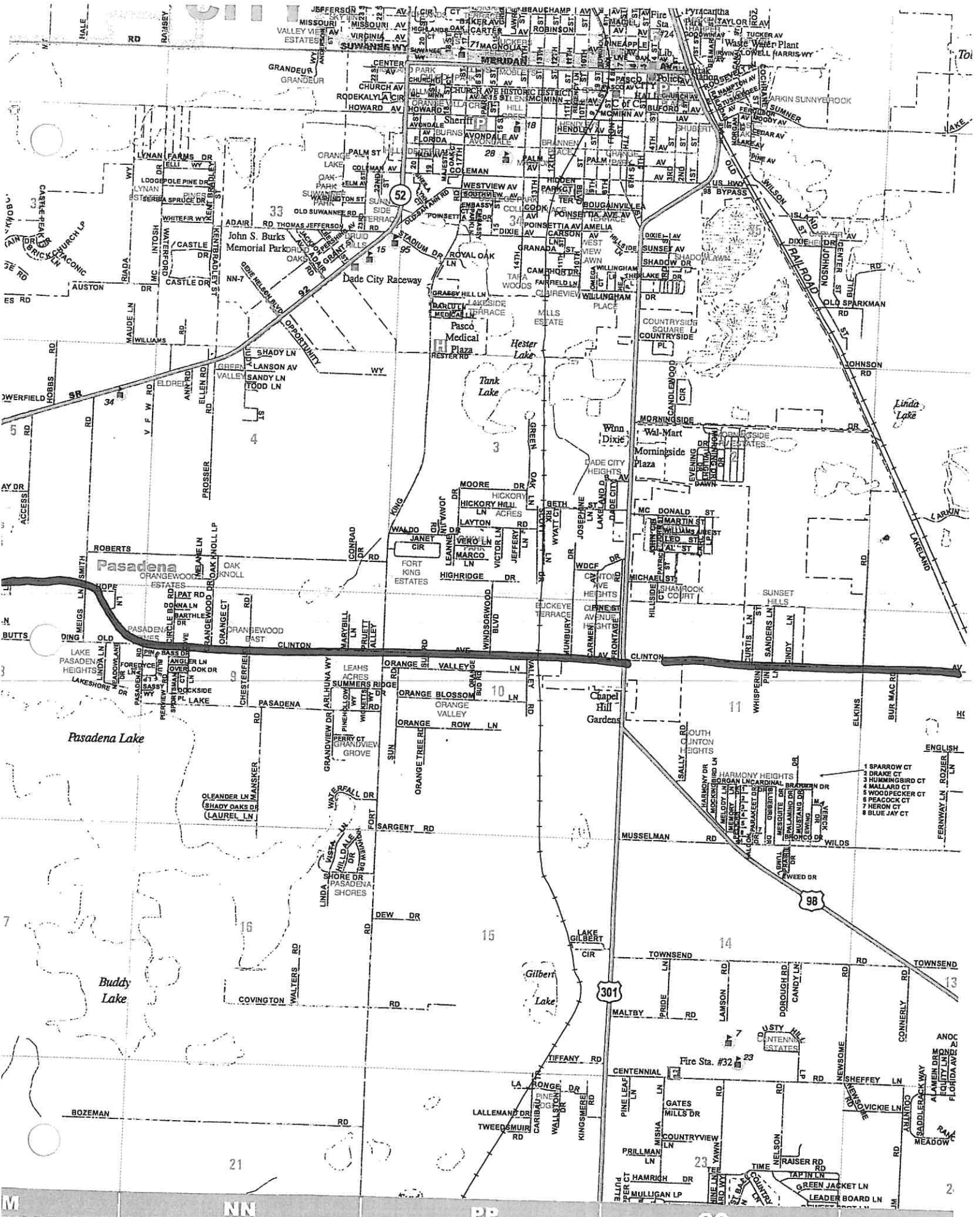
DD R 19 E R 20 E EE FF GG

HOMESTEADS
OF
SADDLEWOOD
ANITA BLVD
MIALEAH SHEPHERD

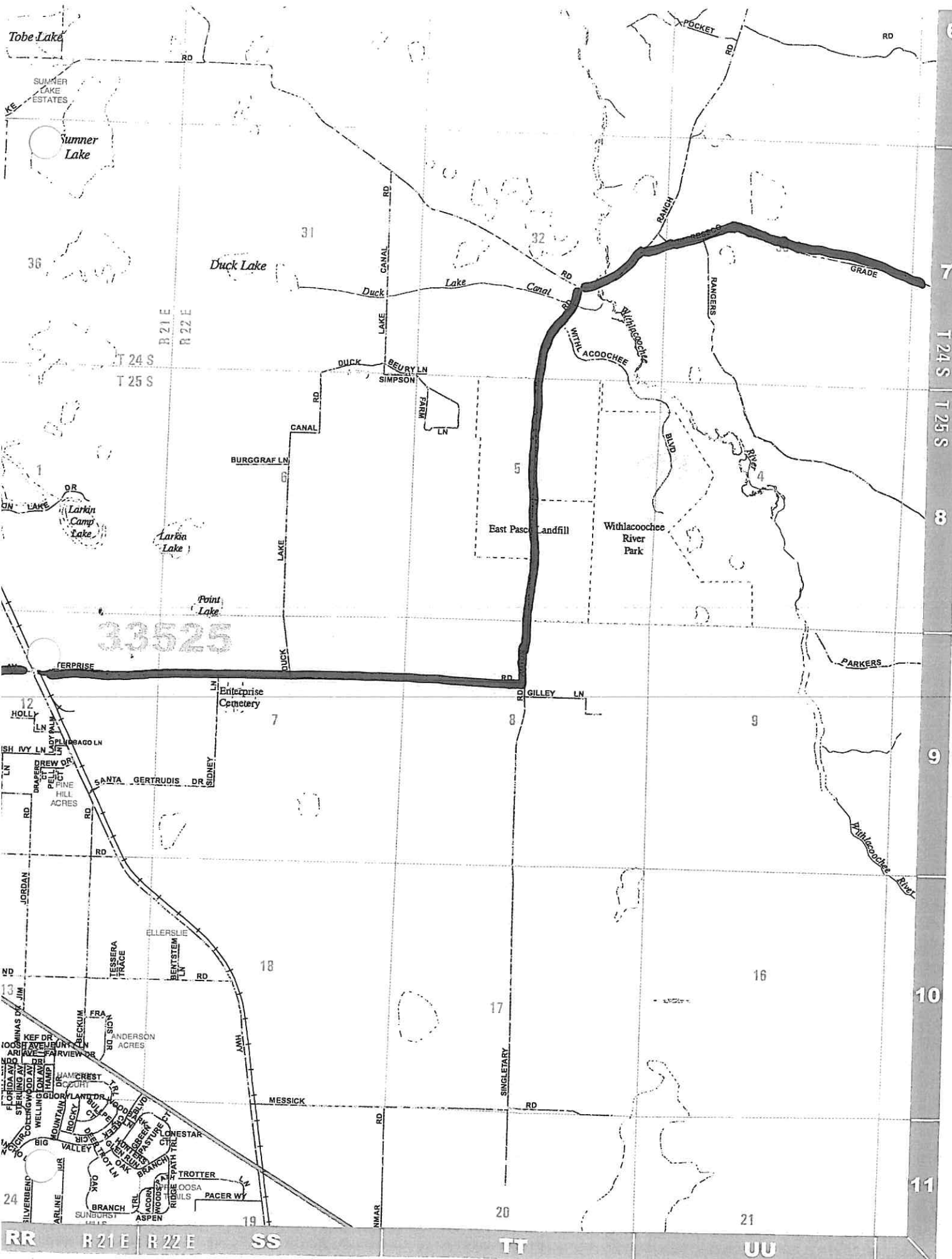


ANTONIO

ST. LEO



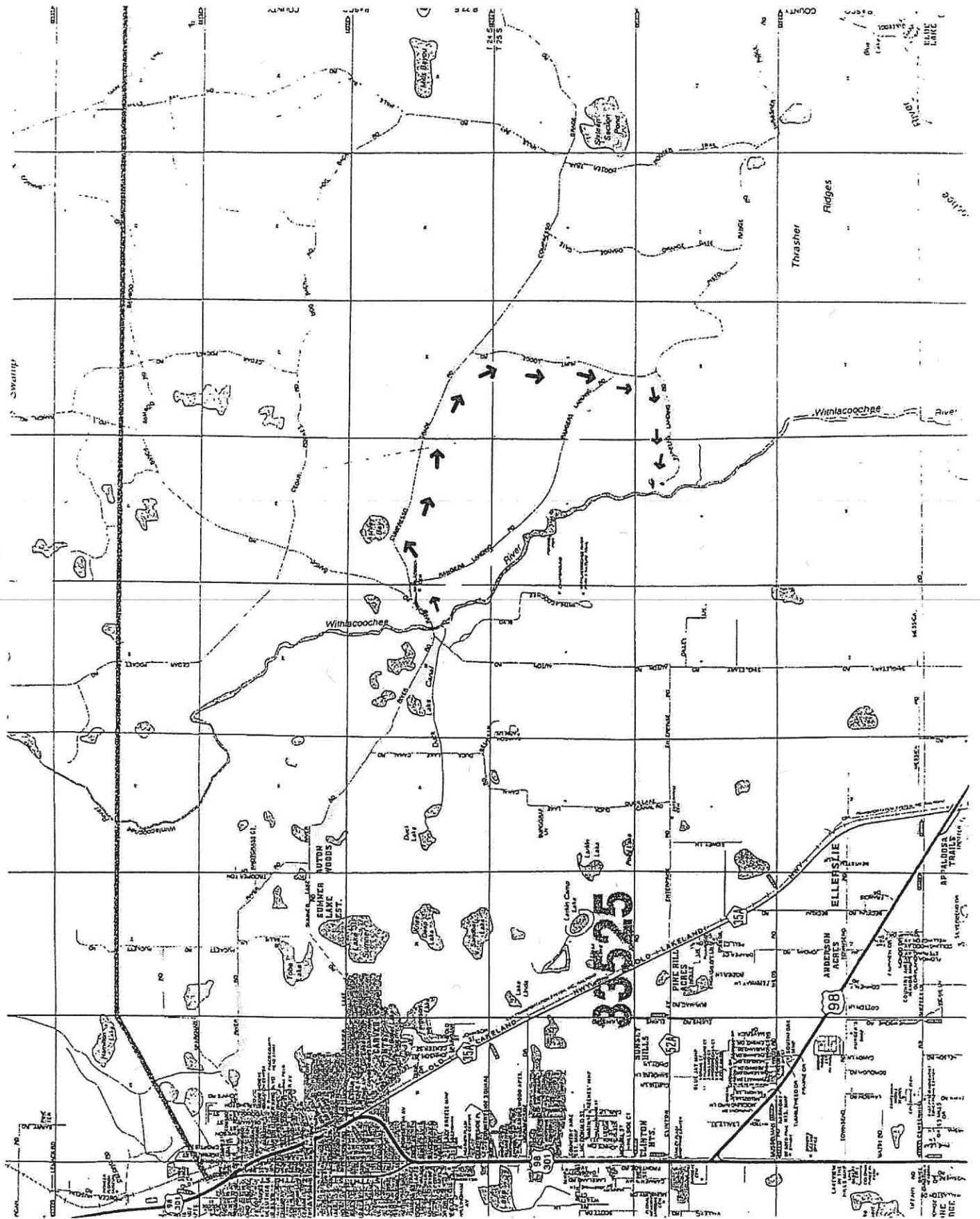
FOR CONTINUATION SEE REVERSE SIDE



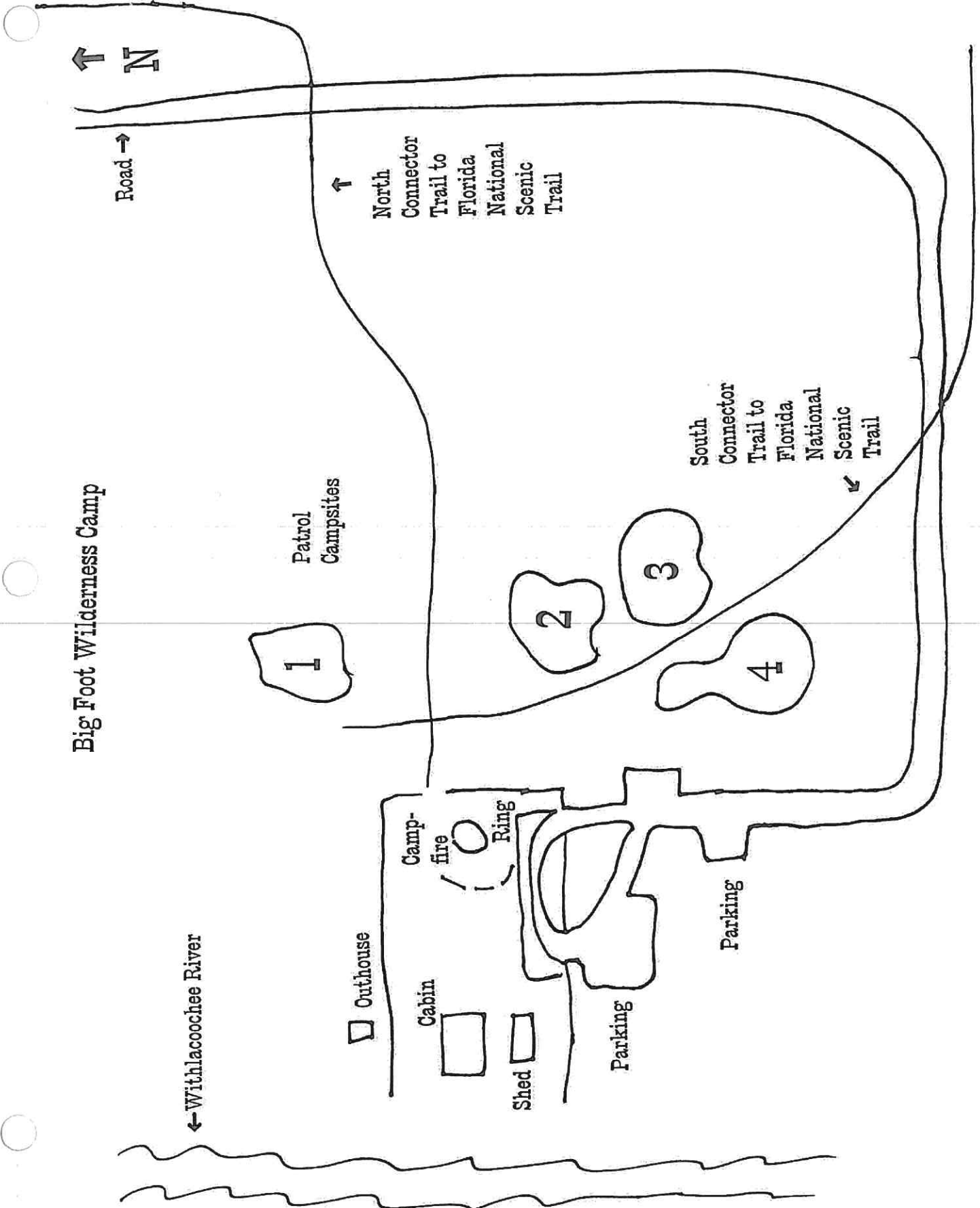
33525

6
7
T 24 S
T 25 S
8
9
10
11

RR R 21 E R 22 E SS TT UU



Big Foot Wilderness Camp



↑ N

Road →

↑

North
Connector
Trail to
Florida
National
Scenic
Trail

Patrol
Campsites

1

2

3

4

South
Connector
Trail to
Florida
National
Scenic
Trail

↓

← Withlacochee River

□ Outhouse

Camp-
fire
Ring

▭ Cabin

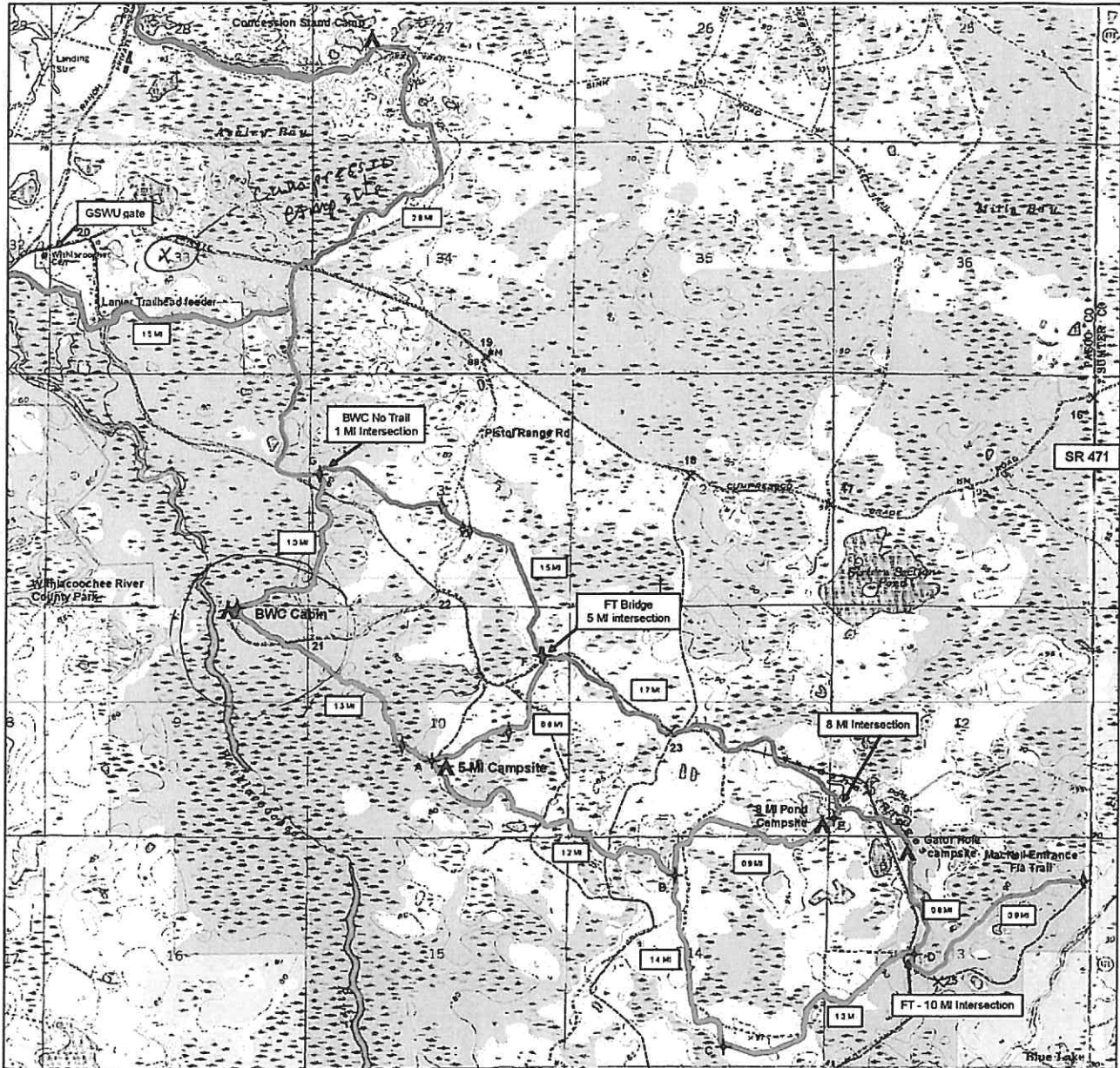
▭ Shed

Parking

Parking

**Bigfoot Wilderness Camp
Florida Trail
Green Swamp West**

Trail Complex



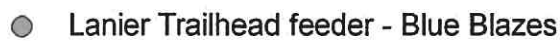
LEGEND



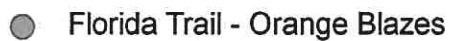
Campsites



BSA - BWC Trail - Blue Blazes



Lanier Trailhead feeder - Blue Blazes



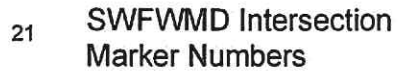
Florida Trail - Orange Blazes



Segment Marker



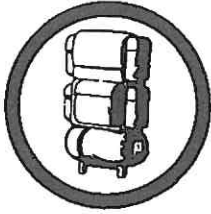
Mileage between Segment Markers



SWFWMD Intersection Marker Numbers

USGS Branchburg 7.5 min Quad
Survey 1960, Photorevised 1987
G1: 666 Geomatrix Inc. 2011, 2012





GREATER TAMPA BAY AREA COUNCIL'S

BIG FOOT WILDERNESS CAMP

1. **Combination Lock.** The combination for the lock to the front gate and to the cabin back porch door is _____. The key that opens all the padlocks is inside cabin on the wall by sink. PLEASE NOTE: When closing the combination lock, the dials must be spun; otherwise the lock will spring open.
2. **Parking.** Make sure that all vehicles are parked in the proper designated parking areas. All camping gear must be carried to campsite.
3. **Power.** Turn on the power so that the pump is on and all lights can be used. Turn the power off (close the main switch in switch box) when you leave.
4. **Sanitation.** Make sure that toilet paper is placed in the outhouses and in the inside bathroom facility. Scouts should be encouraged to use the outhouse; adults the inside facility.
5. The camp rules:
 - (a) The Scout Oath and Law and the Outdoor Code shall be the primary rules of the camp.
 - (b) **No river use.** Review rules regarding non-use of the Withlacoochee River.
 - (c) **Campfires.** The only place where a campfire is permitted is the campfire circle. All cooking fires must be Coleman stoves or backpacker stoves.
 - (d) **Weapons.** Firearms or other weapons are prohibited.
 - (e) **Burial Mound.** Review with the Scoutmaster and the Scout leadership the existence of the burial mound and the fact that it is a Federal offense to disturb the same. **It should be made off limits as with the Withlacoochee River.**

- (f) **Smoking.** All adults should be encouraged not to smoke. However, for those adults that cannot refrain they should field strip the cigarette and place the filters in their pocket or the trash bag to be taken to the camp exit. No cigarette butts should be thrown on the ground. **Please emphasize that this is a pristine campsite and the only way to maintain that is to follow the “leave no trace” rules.**
 - (g) **Alcoholic Beverages.** All alcoholic beverages are prohibited for any Scouting activity and are likewise prohibited on the SWFWMD property.
 - (h) **Generators.** No generators.
 - (i) **Car Camping.** No car camping.
 - (j) **Youth Protection.** Adult leadership is hereby reminded of the youth protection rules for their safety and the safety of the Scouts.
6. **Florida Trail.** There are three connector trails to the Florida National Scenic Trail (5 mile, 8 mile, and 10 mile loop trails). The Florida National Scenic Trail is approximately 17 miles within the Green Swamp Area.
7. **Location of Campsite.** Review site map for patrol camping (leave no trace)
-
8. **Ticks.** The adult leadership should be reminded to encourage the boys to check themselves for ticks.
9. **Wildlife.** The area is abundant with wildlife and the Scouts should limit their activities to observation. Under no circumstances are any wildlife to be subjected to any type of harassing activity. The gopher turtle is a protected species and the area has numerous gopher tortoise burrows. These are to be protected.
10. **Checkout Procedures.**
- (a) All troops utilizing the Big Foot Wilderness Camp will practice “leave no trace” camping. Camping areas, the trails, the cabin and cabin area and the parking areas are to be left “without any trace” of the Scouts' presence.
 - (b) All trash will be bagged and taken out with the vehicles and placed in the dumpster at the front gate. (Behind the truck garage behind the Deputy Sheriff's house)

- (c) Checkout no later than 5:00 p.m. on Sunday
11. **Emergencies.** Cell phones work at the site. In the event of a medical emergency, the nearest assistance is:
- (a) Fire Rescue for ambulance call 911
 - (b) Sheriff's Office - Call 911
 - (c) Nearest hospital: Pasco Regional Medical Center
13100 Ft. King Road
Dade City, Florida
(352) 521-1100
 - (d) Deputy Sheriff lives on site at the entrance to the Green Swamp Preserve.
Mr. Gennis Folsom
(352) 523-0722
12. **Webelos.** Webelos may camp if with a troop.
13. **Number Limitation.** One (1) troop per weekend (unless the scheduled troop agrees to allow another troop to join them).
14. **Equipment List:**

-
- (a) On hand at cabin:
 - (1) Push broom
 - (2) Dust pan
 - (3) Broom
 - (4) Fire extinguisher
 - (b) Equipment needed:
 - (1) Shovel
 - (2) Rake